

AQUA HUE FOUNTAINS

BEAUTIFULLY LIGHTED FOUNTAIN KITS AND CUSTOM DESIGNED WATER EFFECT FOUNTAINS



HYDREL
CORPORATION

SUN VALLEY, CALIFORNIA

A Thing of Beauty



Man has been fascinated by water since the world began, often coming from far distances to gaze upon a beautiful waterfall, a spouting geyser, or a rippling stream. Europeans recognized this interest hundreds of years ago and started to build fountains in their parks and town squares. Some of these fountains, like the Trevi Fountain in Rome, were so lovely that they actually became world famous and even today are attracting tourists to these cities. Most of these early fountains took many years to build with each part carefully engineered and hand made.

Today, with the development of new products, techniques and materials, fountains are being installed everywhere from a small fountain in a home garden or pool to a large multi-effect, multi-color fountain designed to beautify a park or large civic or industrial center. In this busy, hectic world of today, there is something soothing and peaceful about the sight of softly rising and falling water. A fountain is particularly beautiful at night when equipped with lights which play upon the water as it forms its pattern.

With the development of different types of jets and spray patterns, fountains can be designed to complement any type of structure or outdoor area — and within any budget figure. This catalog illustrates some of the most popular types of fountains available from Hydrel, but the designs and creations possible by combining different patterns and effects are practically limitless. Hydrel Fountains include many distinctive and unique installations such as: Decorative fountains functioning as heat exchanger sprays for air conditioning systems, water curtains for concealment of stages — and purely aesthetic creations.

Every one a thing of beauty



FOUNTAINS ARE DIFFERENT

For the most part, effects and water patterns have become more or less standardized in the fountain industry. Available to the prospective purchaser are fountains with cascading waterfalls, open flower patterns, columns of aerated water, spray rings and twirling heads — all of them produced in different sizes and in multiples or combinations, either lighted or unlighted and with changing water, light and color effects.

Although these patterns are standardized, FOUNTAINS ARE DIFFERENT and this difference is the key to Hydrel's superiority. Because a fountain primarily is intended to be "a thing of beauty," design is all important — and Hydrel's designers are skilled in translating form and balance into a finished Fountain Masterpiece. The wide variety of Hydrel fountain components enables our designers to develop fountains of any size, shape or form, from the smallest to the largest and most complex. Design and Engineering work closely together so that the resultant artistic values are retained, while satisfying the exacting demands of efficiency and simplicity of mechanical design and construction.

Because Hydrel is dedicated to the ideal of quality as the very foundation of their reputation, only the finest equipment and components go into a Hydrel fountain, assuring years and years of trouble-free satisfaction. All fountains are fabricated by carefully trained and highly skilled craftsmen under extremely rigid quality control standards. Complete test facilities at the Hydrel plant are used to test each fountain before delivery, assuring that all parts will function properly when installed.

Hydrel also offers a wide choice of underwater fountain lights, and wet and dry niche type swimming pool lights from 75 to 1000 watts, as well as a complete line of accessory equipment. All fixtures and junction boxes are heavy cast bronze construction. For complete information, see Hydrel "Swimming Pool Lighting" and "Fountain Lighting" brochures.

When you select a Hydrel Aqua-Hue Fountain, or Hydrel Lighting Fixture, you can be assured that you have purchased the finest equipment obtainable, backed by a company that has earned an enviable reputation as a manufacturer of quality products.

Remember: "You have the right to expect the best from Hydrel"

©Hydrel Corporation 1972

COVER PHOTO: BOARD OF WATER SUPPLY, HONOLULU, HAWAII

INDEX

Pages

CUSTOM FOUNTAINSA-thru-D

FOUNTAIN KITS

Single Water Effects	2-3-4
Double Water Effects	5-6
Triple Water Effects	7
Multi-Effect, Automatic Changing	8-9-10
Portable Fountains	10

FOUNTAIN COMPONENTS

Anti-Vortex Assemblies	23
Automatic Control Panels	26
Filters	22
Fittings — Pool	23
Float Valves	25
Jet Heads	13 thru 18
Overflow Standpipe Assembly	24
Pumps	19-20-21
Skimmers	23
Spray Rings	12
Strainers, Pump	24
Suction Screens	24
Timing Devices	25-26
Valves, Automatic Solenoid	24-25
Water Level Control Units	25
Wind Controls	26

LIGHTING EQUIPMENTSee Underwater
Lighting Catalog

ADDITIONAL HYDREL PRODUCTS

Fountain Lighting
Swimming Pool Lighting
Recessed Lighting
Architectural Lighting
Landscape Lighting

For Information Contact Your
Hydrel Representative

A PARTIAL LIST OF FOUNTAIN INSTALLATIONS



First National Bank	Waco, Texas	Valley Country Club Apartments	Sherman Oaks, California
Broadview Senior Citizens' Home	Glendale, California	Department of Water & Power	Long Beach, California
Polynesian Cultural Center	Honolulu, Hawaii	Lakeside Country Club	Toluca Lake, California
North Star Center	Minneapolis, Minnesota	City of Marysville	Marysville, California
Beckman Auditorium	Pasadena, California	Museum of Modern Art	New York City, New York
Mid Valley Savings & Loan	Yuba City, California	Wilshire Triangle	Beverly Hills, California
City of Ensenada	Ensenada, Mexico	Glendale Federal Savings	Sherman Oaks, California
Hines Office Building	Houston, Texas	Penrith Fountain	Palm Desert, California
Buffam Department Store	Rolling Hills Estates, Calif.	Peggy's Point Plaza	Houston, Texas
Oak Cliff Savings & Loan	Arlington, Texas	Southern Federal	Tarzana, California
Har Mar Shopping Center	St. Paul, Minnesota	Green Acres Memorial Gardens	Bloomington, California
Kitchens of Sara Lee	Deerfield, Illinois	Prescolite Manufacturing Corp.	San Leandro, California
Western Airlines Office	Los Angeles, California	Tally Ho Inn	Las Vegas, Nevada
Park Lido Professional Building	Newport Beach, California	McAllen State Bank	McAllen, Texas
Diplomat Inn	Montgomery, Alabama	Investor's Marine, Inc.	Newport Beach, California
Citrus College	Azusa, California	Tropicana Hotel	Las Vegas, Nevada
Casa Quajardo S.A.	Durango, Mexico	Steen Geological Office Building	Reno, Nevada
University of Chicago Law School	Chicago, Illinois	Inglewood Cemetery Mortuary	Inglewood, California
Fantasia Golf Course	Oranda, California	Ambassador Hotel	Taipei, Taiwan
Delta Royale Apartments	Burbank, California	Springtown Fountain	Livermore, California
Ambassador College	Pasadena, California	Fountain of Planets*, New York World's Fair	New York City, New York
Fresno State College	Fresno, California	Henry Sassoon Office Building	Long Beach, California
The Willowick Fountain	Houston, Texas	Nekoosa-Edwards Paper Company	Port Edwards, Wisconsin
Ilikai Hotel	Honolulu, Hawaii		
Apex Rotary (Subiaco)	Perth, West Australia		
Doral Beach Hotel	Miami, Florida		
San Lorenzo Lagoon	San Lorenzo, California		
First National Bank	Dallas, Texas		

* Supplier of Partial Equipment

OUTLINE GUIDE FOR DEVELOPING CUSTOM FOUNTAIN PROPOSAL INFORMATION

To assist the factory in developing proposals and cost estimates for you, the following information is essential

- Pool dimensions — depth, diameter and configuration.
- Character of immediately surrounding area, terrain and buildings.
- Furnish plot and elevation drawings.
- Give distance of viewing points from fountain.
- If there is a preference of water patterns and total effect, please explain.
- Do you prefer changing water patterns or single constant pattern?
- Do you wish illuminated fountains? (a) With constant unchanging light source. (b) With timed color changing.
- Do you wish automatic water level control?
- Do you wish Wind Controller unit to automatically diminish height of water patterns when wind reaches pre-determined velocity to avoid spray blow out?
- Do you wish recirculating filter system for cleansing water?
- Approximate budget planned for basic fountain equipment (exclusive of pool, piping to pool, electrical runs and installation).
- If there are any special applications or other features you wish to have included in the proposal for consideration, and not covered in the above, please outline.

FOR THE ATTENTION OF

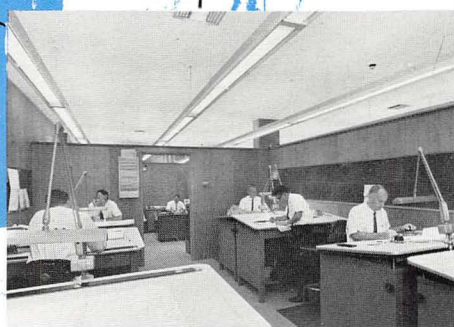
Architects and Engineers

CUSTOM FOUNTAINS

While this catalog illustrates and describes a wide and comprehensive line of fountain kits and components, one of the more important functions of Hydrel is the development and manufacture of custom fountain systems. Towards this end, Hydrel also designs and builds to specification, custom products not listed in this catalog.

Hydrel offers to architects and engineers complete technical assistance such as:

- Aesthetic and environmental design concept.
- Hydraulic systems design.
- Lighting and electrical control equipment design.
- Filtration system design.
- Complete specification outline.
- Budget development.



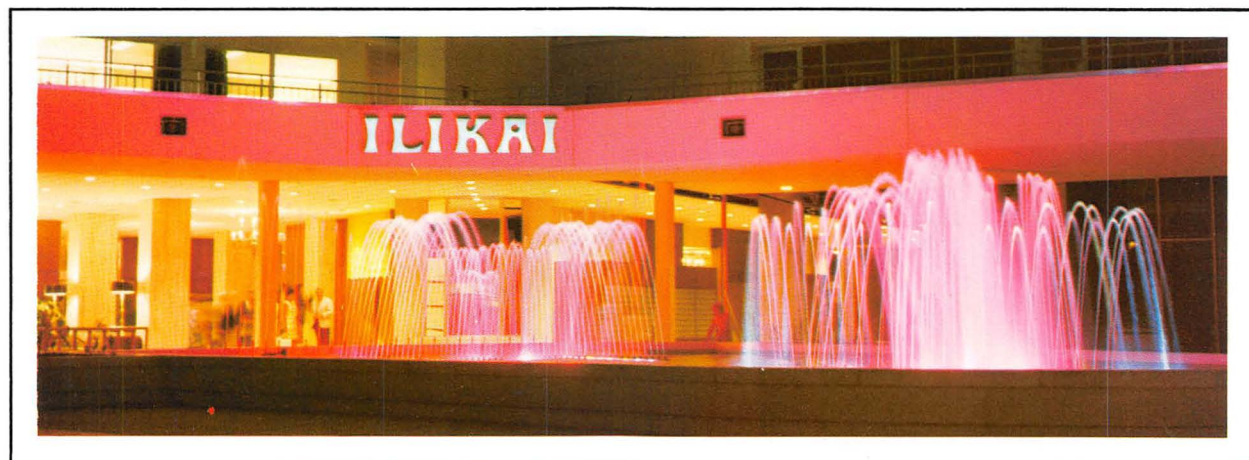


FLOATING FOUNTAINS • Tropicana Hotel • Las Vegas, Nevada

This fountain is unique in that it is not a permanent installation but actually floats in the swimming pool. A special designed crane is used to place the fountain in the center of the pool at dusk and remove it in the morning. Rows of spray jets are also placed around

the outer edge of the pool giving the effect of a fountain of tremendous size. The changing water patterns, combined with a beautiful variety of color changing underwater lights, provides a magnificent view for guests and diners at the Tropicana.

AQUA-HUE MUSICAL BALLET FOUNTAIN • Ilikai Apartment Hotel • Honolulu, Hawaii





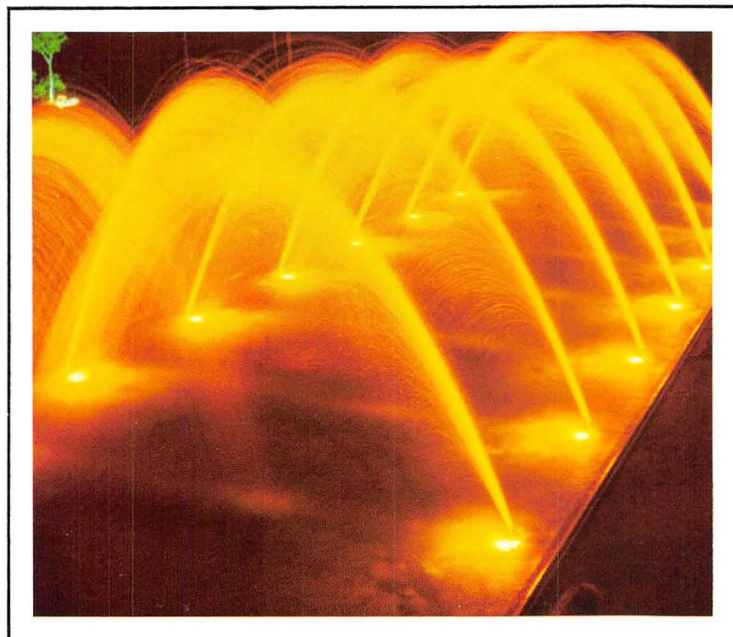
RAINBOW MUSICAL FOUNTAIN • Nekoosa Edwards Paper Company, Port Edwards, Wisconsin



FOUNTAIN OF THE
PLANETS
New York World's Fair
Fountain designed
by J. S. Hamel-
Hamel and Langer



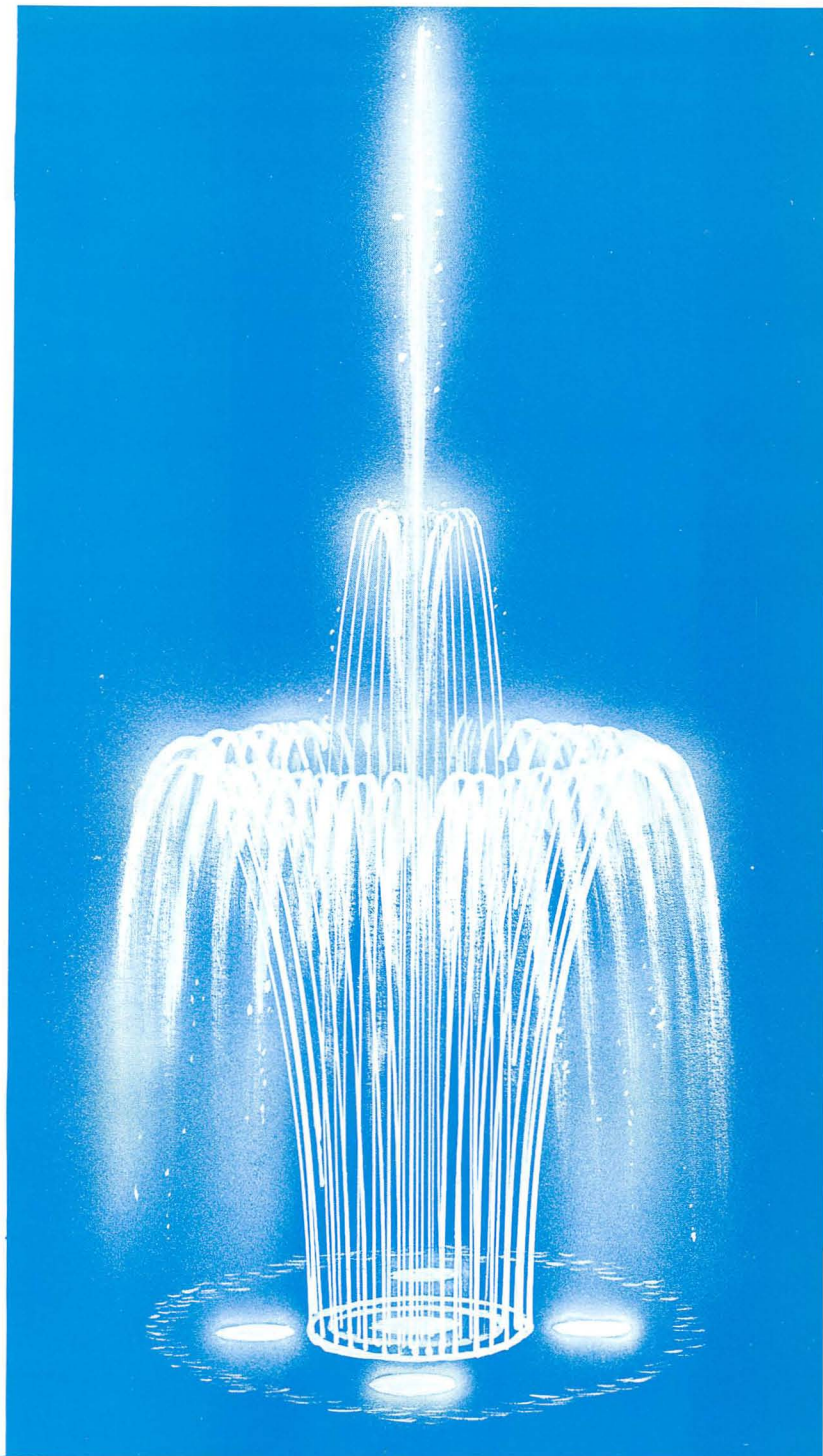
INGLEWOOD PARK CEMETERY • Inglewood, California



GOLDEN BOWER FOUNTAIN
Ambassador College
Pasadena, California



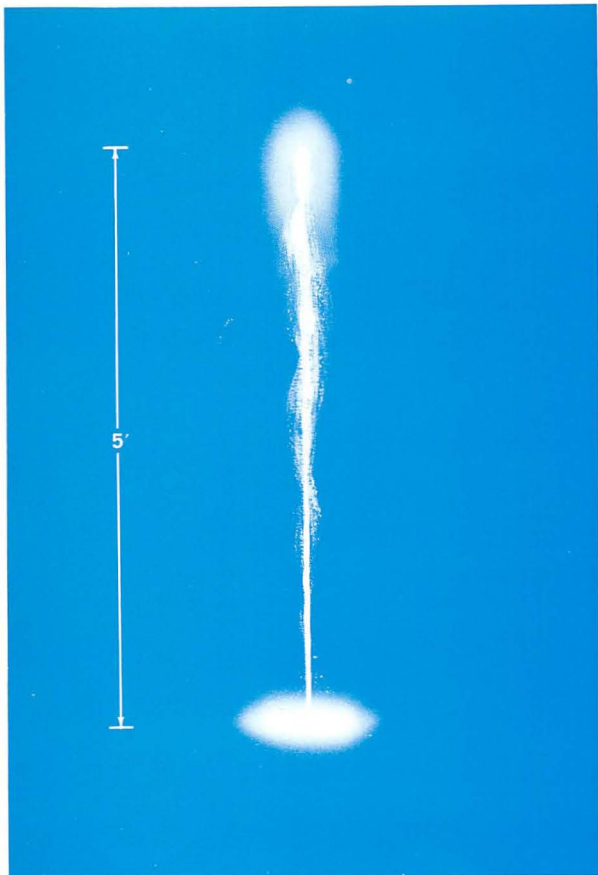
FOUNTAIN KITS



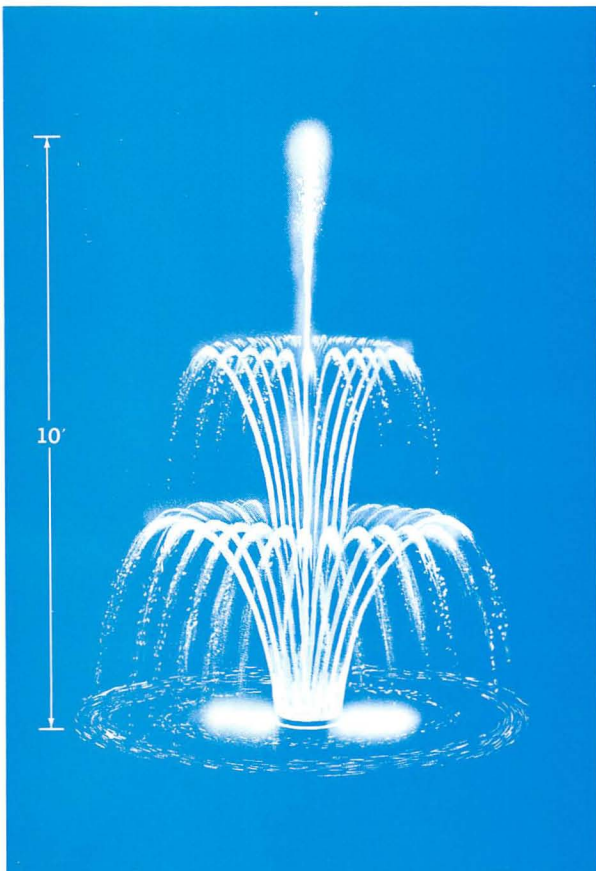
In addition to the design, engineering and manufacturing of Custom Fountains, Hydrel has developed the line of pre-engineered fountain kits represented on the following pages. These fountains are the result of a great deal of effort over a long period of time to develop kits of some of the most popular fountain patterns which could be installed at a minimum cost. All of the basic technical and planning efforts which go into the construction of a fountain has been accomplished for these kits and they are designed to offer the finest value possible.

Each Hydrel Fountain Kit comes complete and ready for installation. Pool requirements and a list of parts are shown to aid in choosing the kit best suited for your specifications. Hydrel underwater lights which have been tested and proved effective for illuminating each fountain are also included. Should other lighting effects be desired, separate lights may be ordered from the section on underwater lights.

On the following pages, you will find Hydrel Fountain Kits ranging from a single effect spray ring to multi-effect, multi-colored fountains. Should none of these kits exactly suit your requirements, Hydrel engineers will be happy to design a custom fountain which will best give the effect you desire. All Hydrel Fountain Kits contain the finest quality materials to give years of trouble-free fountain enjoyment.



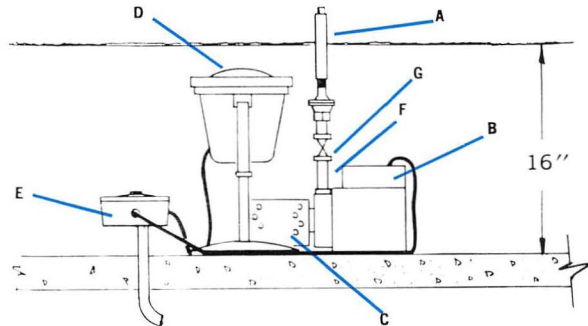
single
water
effect



Kit AH-101

A single jet producing a straight frothy stream of highly aerated water five feet high. May be used singly in a small pool, or several are effective when used in combination in a larger pool or pond.

SPRAY HEIGHT 5 Feet Maximum
POOL DIAMETER 10 Feet Minimum
REQUIRED WATER DEPTH 16 Inches



- | | |
|---|--|
| A. 1 - AERATING JET. | E. 1 - BRONZE UNDERWATER JUNCTION BOX WITH WATER-TIGHT PRESSURE BUSHINGS AND 3/4" NPT HUB IN BOTTOM. |
| B. 1 - 1/10 HP 115V SUBMERSIBLE PUMP. | F. 1 - COMPLETE BRASS MANIFOLD. |
| C. 1 - BRASS SUCTION SCREEN. | G. 1 - BRASS HEIGHT CONTROL VALVE. |
| D. 1 - 150 WATT UNDERWATER LIGHT WITH LENS COLOR AS SPECIFIED — RED, BLUE, GREEN, AMBER OR CLEAR. | 1 - SET INSTALLATION DRAWINGS. |

Kit AH-101 CB

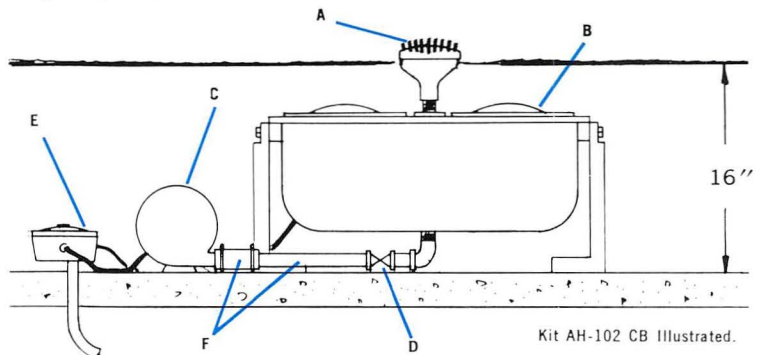
Same specifications as Kit AH-101 except one Aqua-Hue Color Blender replaces the 150 watt underwater light. 18" minimum depth required at jet.

AQUA-HUE FOUNTAIN KITS

Kit AH-102

This graceful Fleur-De-Lis Jet is a favorite with its delicate flower-like pattern. For other variations of this popular fountain, see the Components Section of this catalog.

SPRAY HEIGHT 10 Feet Maximum
SPRAY DIAMETER 14 Feet Maximum
POOL DIAMETER 20 Feet Minimum
REQUIRED WATER DEPTH 16 Inches



- | | |
|---|--|
| A. 1 - FLEUR-DE-LIS JET. | D. 1 - BRASS HEIGHT CONTROL VALVE. |
| B. 1 - 300 WATT UNDERWATER LIGHT WITH LENS COLOR AS SPECIFIED — RED, BLUE, GREEN, AMBER OR CLEAR. | E. 1 - BRONZE UNDERWATER JUNCTION BOX WITH WATER-TIGHT PRESSURE BUSHINGS AND 3/4" NPT HUB IN BOTTOM. |
| C. 1 - 1/3 HP BRONZE SUBMERSIBLE PUMP WITH BRASS SUCTION SCREEN. | F. 1 - COMPLETE BRASS MANIFOLD. |
| | 1 - SET INSTALLATION DRAWINGS. |

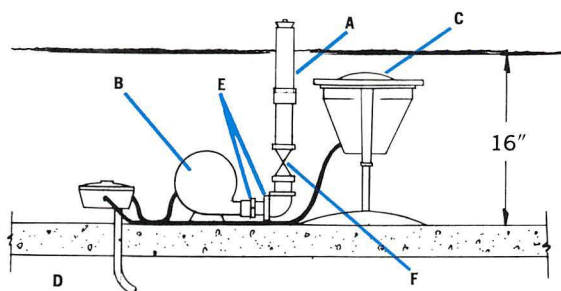
Kit AH-102 CB

Same specifications as Kit AH-102 except one Aqua-Hue Color Blender replaces the 300 watt underwater light.

Kit AH-103

The mushroom effect produced by this kit creates an unbroken dome sheet of clear water and when used with the Hydrel Aqua-Hue Color Blender, the iridescent reflection of colors is quite dramatic.

SPRAY DIAMETER 3 Feet Maximum
 POOL DIAMETER 7 Feet Minimum
 REQUIRED WATER DEPTH 16 Inches



- A. 1 - MUSHROOM JET — 18" HIGH
- B. 1 - 1/2 HP BRONZE SUBMERSIBLE PUMP WITH BRASS SUCTION SCREEN.
- C. 3 - 300 WATT UNDERWATER LIGHTS WITH LENS COLOR AS SPECIFIED — RED, BLUE, GREEN, AMBER OR CLEAR.
- D. 1 - BRONZE UNDERWATER JUNCTION BOX WITH WATERTIGHT PRESSURE BUSHINGS AND 3/4" NPT HUB IN BOTTOM.
- E. 1 - COMPLETE BRASS MANIFOLD.
- F. 1 - BRASS HEIGHT CONTROL VALVES.
 1 - SET INSTALLATION DRAWINGS.

Kit AH-103 CB

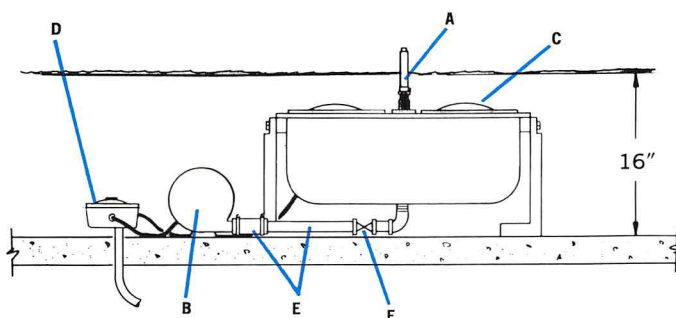
Same specifications as Kit AH-103 except one Aqua-Hue Color Blender replaces the three 300 watt lights.

AQUA-HUE FOUNTAIN KITS

Kit AH-105

An interesting water pattern is created by this exploding jet as the water literally bursts at the center when the rising and descending water meet.

SPRAY HEIGHT 6 Feet Maximum
 POOL DIAMETER 10 Feet Minimum
 REQUIRED WATER DEPTH 16 Inches



Kit AH-105 CB ILLUSTRATED

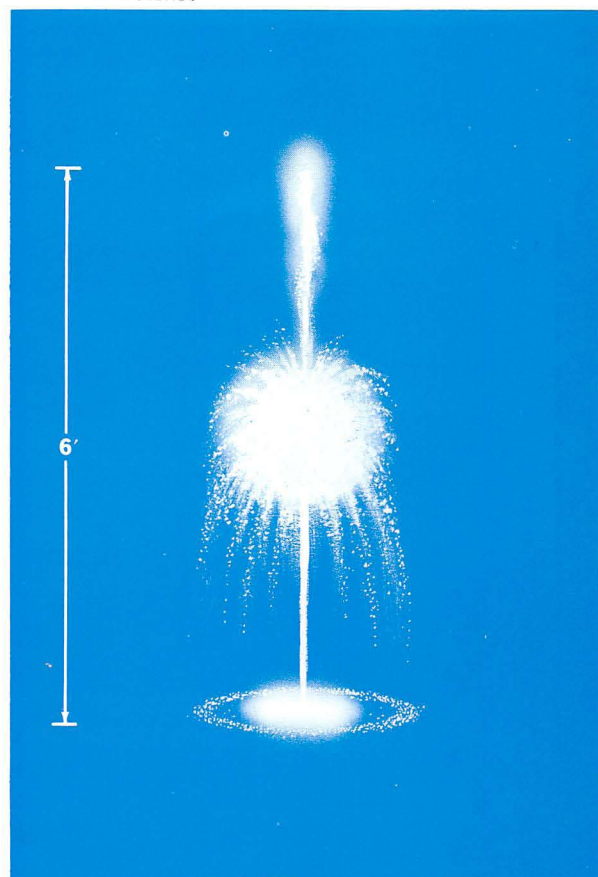
- A. 1 - EXPLODING JET.
- B. 1 - 1/2 HP BRONZE SUBMERSIBLE PUMP WITH BRASS SUCTION SCREEN.
- C. 1 - 150 WATT UNDERWATER LIGHT WITH LENS COLOR AS SPECIFIED — RED, BLUE, GREEN, AMBER OR CLEAR.
- D. 1 - BRONZE UNDERWATER JUNCTION BOX WITH WATERTIGHT PRESSURE BUSHINGS AND 3/4" NPT HUB IN BOTTOM.
- E. 1 - COMPLETE BRASS MANIFOLD.
- F. 1 - BRASS HEIGHT CONTROL VALVE.
 1 - SET INSTALLATION DRAWINGS.

Kit AH-105 CB

Same specifications as Kit AH-105 except one Aqua-Hue Color Blender replaces the 150 watt underwater light.

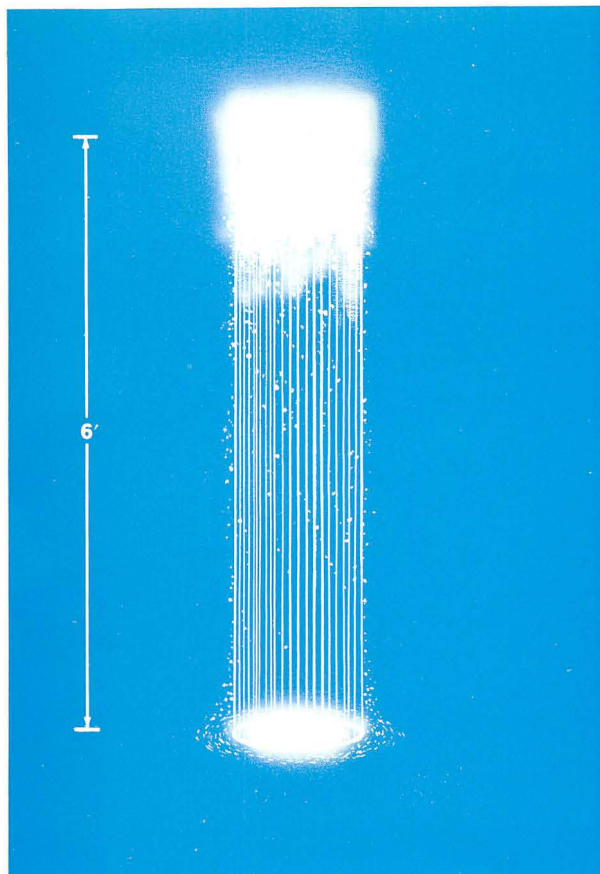


*single
water
effect*

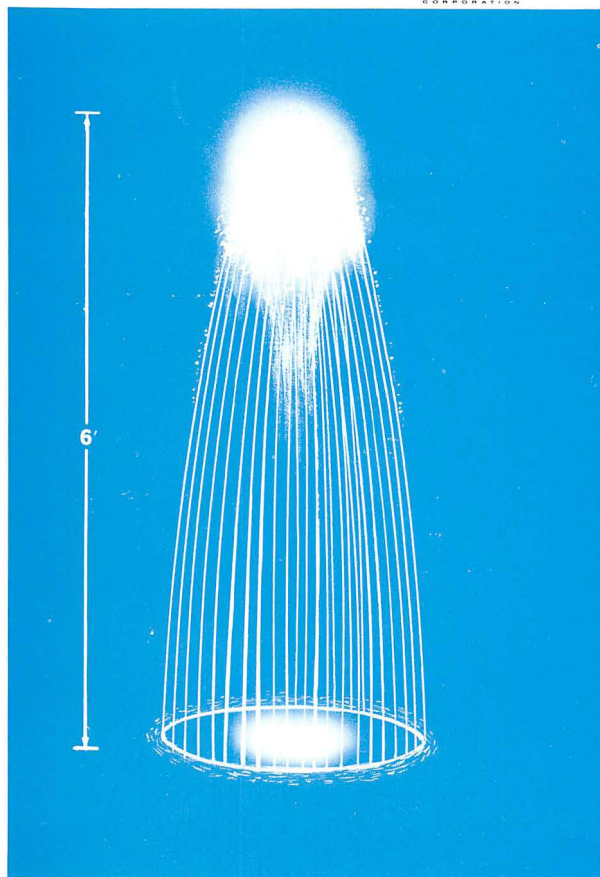


LAMPS NOT INCLUDED EXCEPT ON SPECIAL ORDER.

HYDREL CORPORATION



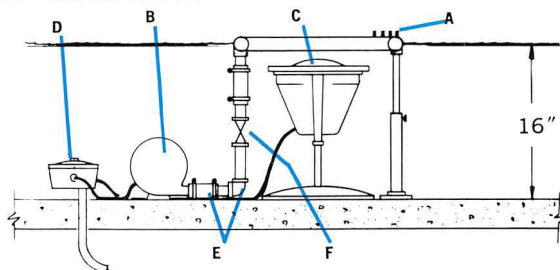
single
water
effect



Kit AH-120

The vertical pattern produced by this kit forms an interesting "Column" effect that is quite popular in pools located in confined areas.

SPRAY HEIGHT 6 Feet Maximum
POOL DIAMETER 10 Feet Minimum
REQUIRED WATER DEPTH 16 Inches



- A. 1 - 16" DIAMETER SPRAY RING WITH VERTICAL FALL SPRAY PATTERN.
- B. 1 - 1/2 HP BRONZE SUBMERSIBLE PUMP WITH BRASS SUCTION SCREEN.
- C. 1 - 300 WATT UNDERWATER LIGHT WITH LENS COLOR AS SPECIFIED — RED, BLUE, GREEN, AMBER OR CLEAR.
- D. 1 - BRONZE UNDERWATER JUNCTION BOX WITH WATERTIGHT PRESSURE BUSHINGS AND 3/4" NPT HUB IN BOTTOM.
- E. 1 - COMPLETE BRASS MANIFOLD.
- F. 1 - BRASS HEIGHT CONTROL VALVE.

Kit AH-120 CB Same specifications as Kit AH-120 except one Aqua-Hue Color Blender replaces the 300 watt underwater light.

Kit AH-121 Same specifications as Kit AH-120 except with a 16" spray ring having a center fall pattern.

Kit AH-121 CB Same specifications as Kit AH-121 with Aqua-Hue Color Blender.

Kit AH-122 Same specifications as Kit AH-120 except with a 16" spray ring having an outside fall pattern.

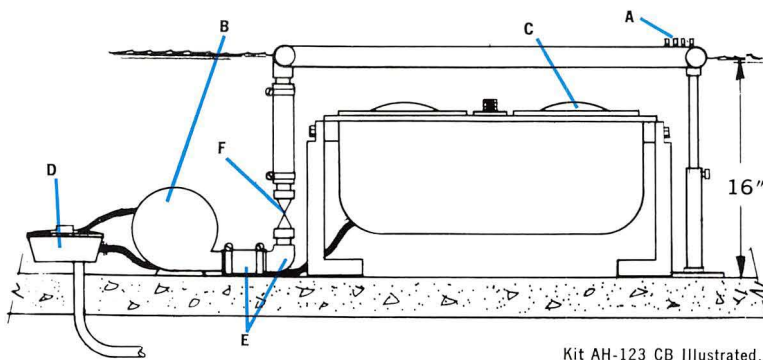
Kit AH-122 CB Same specifications as Kit AH-122 with Aqua-Hue Color Blender.

AQUA-HUE FOUNTAIN KITS

Kit AH-123

The center fall water pattern makes this fountain ideal for use in smaller pools and provides a point of interest for apartments, motels, office buildings or wherever a smaller fountain is desired. It is also effective when used in multiples in larger pool areas.

SPRAY HEIGHT 6 Feet Maximum
POOL DIAMETER 12 Feet Minimum
REQUIRED WATER DEPTH 16 Inches



Kit AH-123 CB Illustrated.

- A. 1 - 30" DIAMETER SPRAY RING WITH CENTER FALL SPRAY PATTERN.
- B. 1 - 1/2 HP BRONZE SUBMERSIBLE PUMP WITH BRASS SUCTION SCREEN.
- C. 1 - 300 WATT UNDERWATER LIGHT WITH LENS COLOR AS SPECIFIED — RED, BLUE, GREEN, AMBER OR CLEAR.
- D. 1 - BRONZE UNDERWATER JUNCTION BOX WITH WATERTIGHT PRESSURE BUSHING AND 3/4" NPT HUB IN BOTTOM.
- E. 1 - COMPLETE BRASS MANIFOLD.
- F. 1 - BRASS HEIGHT CONTROL VALVE.

Kit AH-123 CB

Same specifications as Kit AH-123 except one Aqua-Hue Color Blender replaces the 300 watt underwater light.

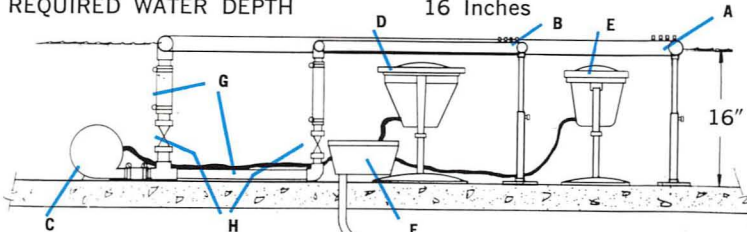
LAMPS NOT INCLUDED EXCEPT ON SPECIAL ORDER.

HYDREL CORPORATION

Kit AH-215

The use of two different spray patterns, designed to attractively complement each other, makes this fountain a handsome addition to any outdoor area. Available in three different kit sizes to fit different size requirements.

SPRAY DIAMETER 5 Feet Maximum
 POOL DIAMETER 12 Feet Minimum
 REQUIRED WATER DEPTH 16 Inches



- A. 1 - 60" DIAMETER SPRAY RING WITH INSIDE FALL SPRAY PATTERN. 3' HIGH.
- B. 1 - 24" DIAMETER SPRAY RING WITH CENTER FALL SPRAY PATTERN. 6' HIGH.
- C. 1 - 1/2 HP BRONZE SUBMERSIBLE PUMP WITH BRASS SUCTION SCREEN.
- D. 1 - 300 WATT UNDERWATER LIGHT WITH AMBER LENS.
- E. 4 - 150 WATT UNDERWATER LIGHTS WITH GREEN LENS.
- F. 1 - BRONZE UNDERWATER JUNCTION BOX WITH WATERTIGHT PRESSURE BUSHINGS AND 3/4" NPT HUB IN BOTTOM.
- G. 1 - COMPLETE BRASS MANIFOLD.
- H. 2 - BRASS HEIGHT CONTROL VALVES. 1 - SET INSTALLATION DRAWINGS.

Kit AH-215 CB Same specifications as Kit AH-215 except one Aqua-Hue Color Blender replaces the 300 watt underwater light.

Kit AH-216 Same specifications as Kit AH-215 modified to use 48" and 16" diameter spray rings and 1/3 HP bronze submersible pump.

Kit AH-216 CB Same specifications as Kit AH-216 with Aqua-Hue Color Blender.

Kit AH-217 Same specifications as Kit AH-215 modified to use 36" and 12" diameter spray rings and 1/4 HP bronze submersible pump.

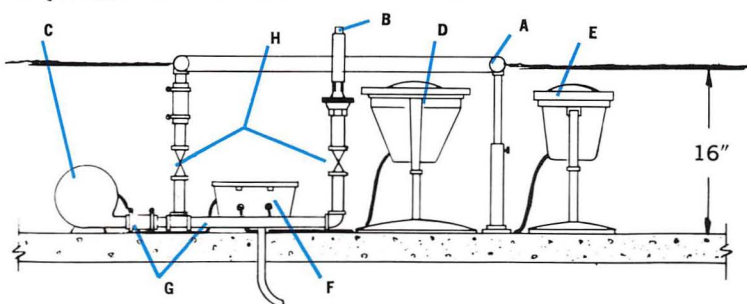
Kit AH-217 CB Same specifications as Kit AH-217 with Aqua-Hue Color Blender.

AQUA-HUE FOUNTAIN KITS

Kit AH-218

The outside fall pattern forms a base for the aerated center stream. This fountain is especially effective when lighted. It may be ordered with exploding center jet for slightly different pattern. (See Kit AH-219)

SPRAY DIAMETER 4 Feet Maximum
 POOL DIAMETER 10 Feet Minimum
 REQUIRED WATER DEPTH 16 Inches

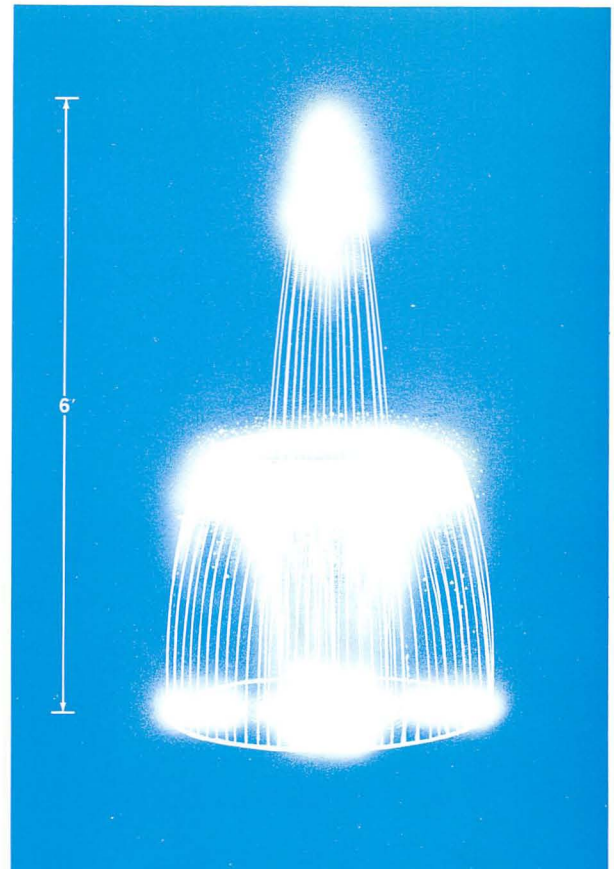


- A. 1 - 30" DIAMETER SPRAY RING WITH OUTSIDE FALL SPRAY PATTERN. 3' HIGH.
- B. 1 - AERATING JET. 5' HIGH.
- C. 1 - 3/4 HP BRONZE SUBMERSIBLE PUMP WITH BRASS SUCTION SCREEN.
- D. 1 - 300 WATT UNDERWATER LIGHT WITH AMBER LENS TO ILLUMINATE AERATING JET.
- E. 4 - 150 WATT UNDERWATER LIGHTS WITH BLUE LENS. TO ILLUMINATE SPRAY RING.
- F. 1 - BRONZE UNDERWATER JUNCTION BOX WITH WATERTIGHT PRESSURE BUSHINGS AND 3/4" NPT HUB IN BOTTOM.
- G. 1 - COMPLETE BRASS MANIFOLD.
- H. 2 - BRASS HEIGHT CONTROL VALVES. 1 - SET INSTALLATION DRAWINGS.

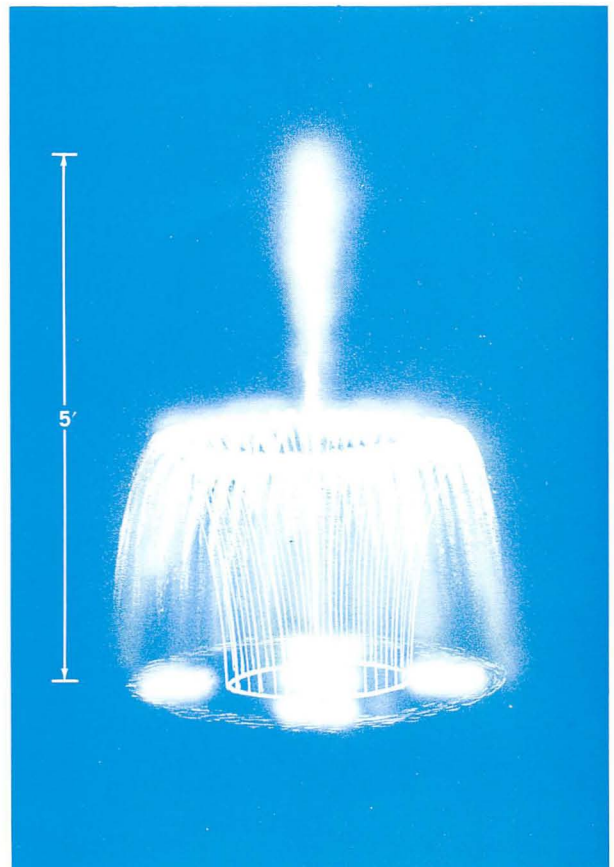
Kit AH-218 CB Same specifications as Kit AH-218 except one Aqua-Hue Color Blender replaces the 300 watt underwater light. 18" minimum water depth required at jet.

Kit AH-219 Same specifications as Kit AH-218 except one exploding jet replaces the aerating jet.

Kit AH-219 CB Same as Kit AH-219 with Aqua-Hue Color Blender.

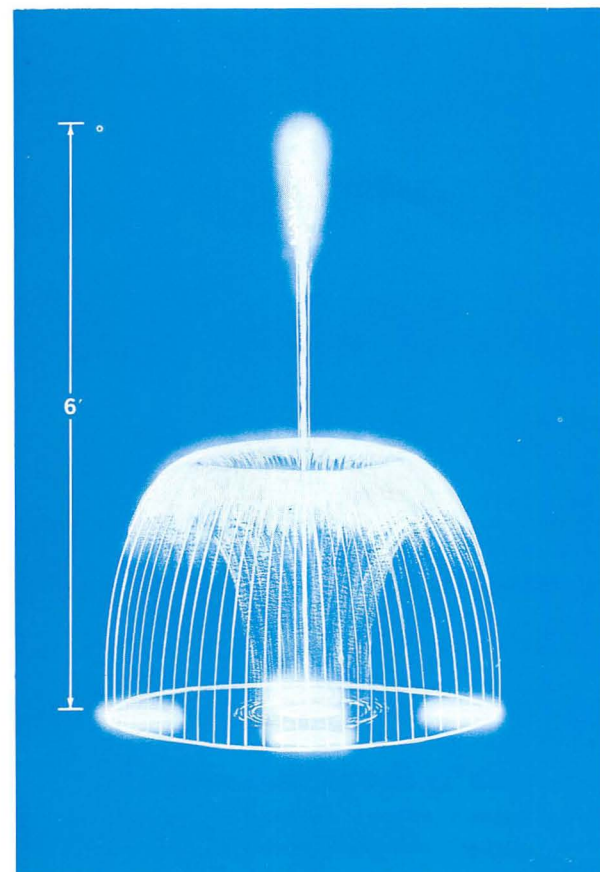


*double
water
effect*





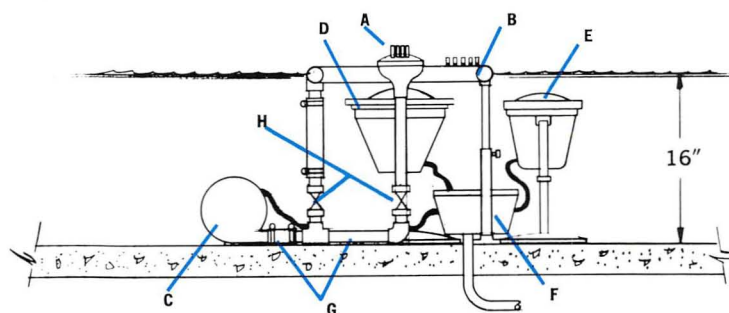
*double
water
effect*



Kit AH-220

An unusual fountain effect is obtained by this combination of a center cluster of fine streams of water shooting upward and a ring of spray rising upward and falling softly to the outside.

SPRAY DIAMETER	5 Feet Maximum
POOL DIAMETER	14 Feet Minimum
REQUIRED WATER DEPTH	16 Inches



- A. 1 - MJH SERIES JET CLUSTER. 7' HIGH.
- B. 1 - 16" DIAMETER SPRAY RING WITH OUTSIDE FALL SPRAY PATTERN. 4' HIGH.
- C. 1 - 1/2 HP BRONZE SUBMERSIBLE PUMP WITH BRASS SUCTION SCREEN.
- D. 1 - 300 WATT UNDERWATER LIGHT WITH AMBER LENS TO ILLUMINATE CENTER JET CLUSTER.
- E. 4 - 150 WATT UNDERWATER LIGHTS WITH RED LENS TO ILLUMINATE 16" RING.
- F. 1 - BRONZE UNDERWATER JUNCTION BOX WITH WATERTIGHT PRESSURE BUSHINGS AND 3/4" NPT HUB IN BOTTOM.
- G. 1 - COMPLETE BRASS MANIFOLD.
- H. 2 - BRASS HEIGHT CONTROL VALVES.
1 - SET INSTALLATION DRAWINGS.

Kit AH-220 CB

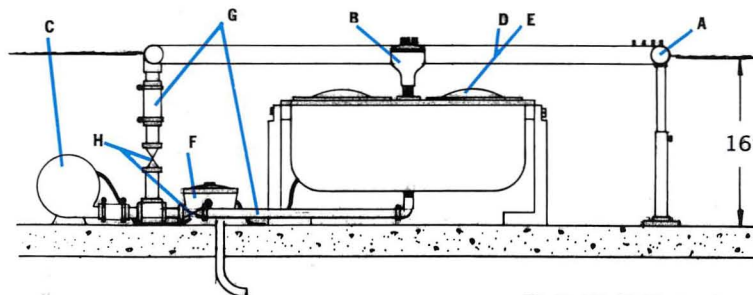
Same specifications as Kit AH-220 except one Aqua-Hue Color Blender replaces the 300 watt underwater light.

AQUA-HUE FOUNTAIN KITS

Kit AH-221

A similar fountain to the one above except the outside pattern is a larger spray ring which sends the water rising up and inward, falling to the center of the fountain. Very effective when illuminated.

SPRAY DIAMETER	4 Feet Maximum
POOL DIAMETER	12 Feet Minimum
REQUIRED WATER DEPTH	16 Inches



Kit AH-221 CB Illustrated.

- A. 1 - 48" DIAMETER SPRAY RING WITH INSIDE FALL SPRAY PATTERN. 3' HIGH.
- B. 1 - MJH SERIES JET CLUSTER. 6' HIGH.
- C. 1 - 1/2 HP BRONZE SUBMERSIBLE PUMP WITH BRASS SUCTION SCREEN.
- D. 1 - 300 WATT UNDERWATER LIGHT WITH RED LENS TO ILLUMINATE CENTER JET CLUSTER.
- E. 4 - 150 WATT UNDERWATER LIGHTS WITH BLUE LENS TO ILLUMINATE 48" RING.
- F. 1 - BRONZE UNDERWATER JUNCTION BOX WITH WATERTIGHT PRESSURE BUSHINGS AND 3/4" NPT HUB IN BOTTOM.
- G. 1 - COMPLETE BRASS MANIFOLD.
- H. 2 - BRASS HEIGHT CONTROL VALVES.
1 - SET INSTALLATION DRAWINGS.

Kit AH-221 CB

Same specifications as Kit AH-221 except one Aqua-Hue Color Blender replaces the 300 watt light and the four 150 watt lights.

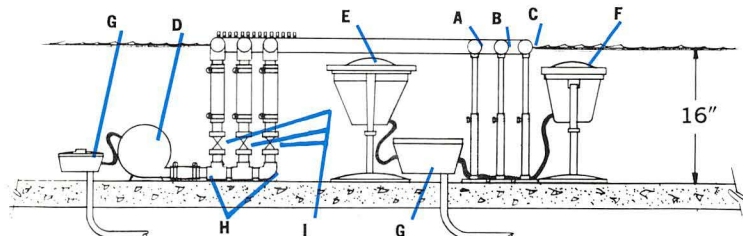
LAMPS NOT INCLUDED EXCEPT ON SPECIAL ORDER.

HYDREL CORPORATION

Kit AH-315

Many splendid effects can be obtained by the use of three different spray patterns. In the medium price range, these kits are ideal for use in courts of office buildings, department stores or malls.

SPRAY DIAMETER 6 Feet Maximum
 POOL DIAMETER 16 Feet Minimum
 REQUIRED WATER DEPTH 16 Inches



- | | |
|---|---|
| A. 1 - 24" DIAMETER SPRAY RING WITH CENTER FALL SPRAY PATTERN. 6' HIGH. | BLUE LENS TO ILLUMINATE CENTER EFFECT. |
| B. 1 - 30" DIAMETER SPRAY RING WITH VERTICAL FALL SPRAY PATTERN. 4'6" HIGH. | F. 5 - 150 WATT UNDERWATER LIGHTS WITH GREEN LENS TO ILLUMINATE OUTER SPRAY RINGS. |
| C. 1 - 36" DIAMETER SPRAY RING WITH OUTSIDE FALL SPRAY PATTERN. 3' HIGH. | G. 1 - BRONZE UNDERWATER JUNCTION BOX WITH WATERTIGHT PRESSURE BUSHINGS AND 3/4" NPT HUB IN BOTTOM. |
| D. 1 - 3/4 HP BRONZE SUBMERSIBLE PUMP WITH BRASS SUCTION SCREEN. | H. 1 - COMPLETE BRASS MANIFOLD. |
| E. 1 - 300 WATT UNDERWATER LIGHT WITH | I. 3 - BRASS HEIGHT CONTROL VALVES. |
| | 1 - SET INSTALLATION DRAWINGS. |

Kit AH-315 CB

Same specifications as Kit AH-315 except one Aqua-Hue Color Blender replaces the 300 watt underwater light.

Kit AH-316

Same specifications as Kit AH-315 except 24" ring with vertical fall, 30" ring with outside fall and 36" ring with outside fall spray pattern.

Kit AH-316 CB

Same as Kit AH-316 with Aqua-Hue Color Blender.



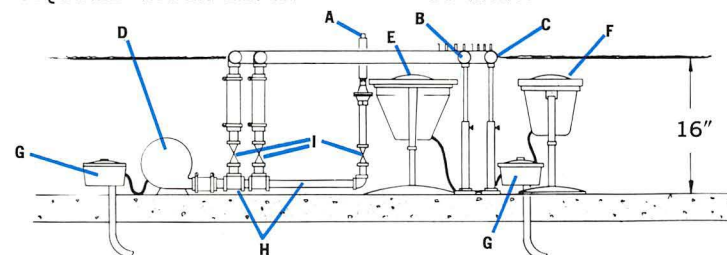
*triple
water
effect*

AQUA-HUE FOUNTAIN KITS

Kit AH-317

Another combination of three spray effects brought together to form a beautiful fountain. Although not a large fountain, a dramatic effect is obtained by the use of proper balance.

SPRAY DIAMETER 5 Feet Maximum
 POOL DIAMETER 12 Feet Minimum
 REQUIRED WATER DEPTH 16 Inches

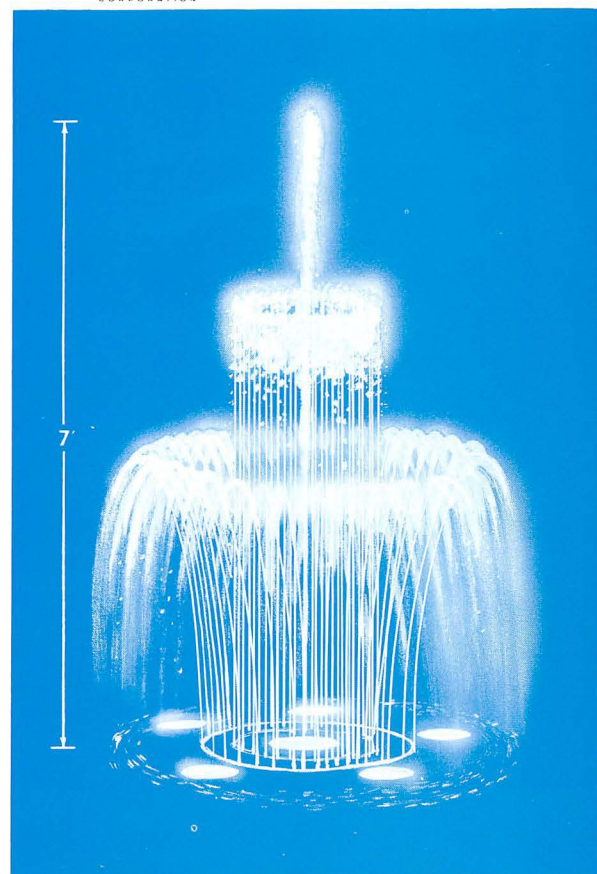


- | | |
|--|---|
| A. 1 - AERATING JET. 7' HIGH. | AMBER LENS TO ILLUMINATE CENTER EFFECT. |
| B. 1 - 24" DIAMETER SPRAY RING WITH VERTICAL FALL SPRAY PATTERN 5' HIGH. | F. 5 - 150 WATT UNDERWATER LIGHTS WITH BLUE LENS TO ILLUMINATE OUTER SPRAY EFFECT. |
| C. 1 - 30" DIAMETER SPRAY RING WITH OUTSIDE FALL SPRAY PATTERN 4' HIGH. | G. 1 - BRONZE UNDERWATER JUNCTION BOX WITH WATERTIGHT PRESSURE BUSHINGS AND 3/4" NPT HUB IN BOTTOM. |
| D. 1 - 3/4 HP BRONZE SUBMERSIBLE PUMP WITH BRASS SUCTION SCREEN. | H. 1 - COMPLETE BRASS MANIFOLD. |
| E. 1 - 300 WATT UNDERWATER LIGHT WITH | I. 3 - BRASS HEIGHT CONTROL VALVES. |
| | 1 - SET INSTALLATION DRAWINGS. |

Kit AH-317 CB Same specifications as Kit AH-317 except one Aqua-Hue Color Blender replaces the 300 watt underwater light. 20" water depth required.

Kit AH-318 Same as Kit AH-317 except the center Aerating Jet is replaced by an exploding jet. 1/2 HP bronze submersible pump provided.

Kit AH-318 CB Same as AH-318 with Aqua-Hue Color Blender.



LAMPS NOT INCLUDED EXCEPT ON SPECIAL ORDER.

HYDREL CORPORATION

AQUA-HUE FOUNTAIN KITS

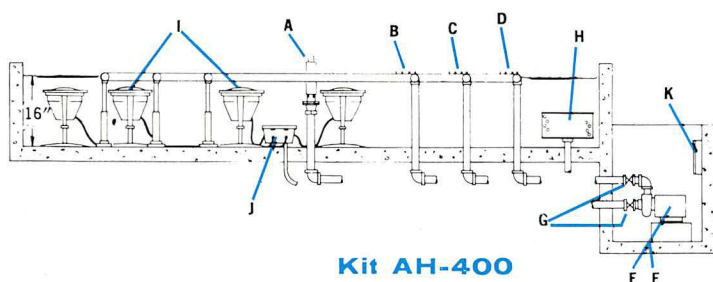
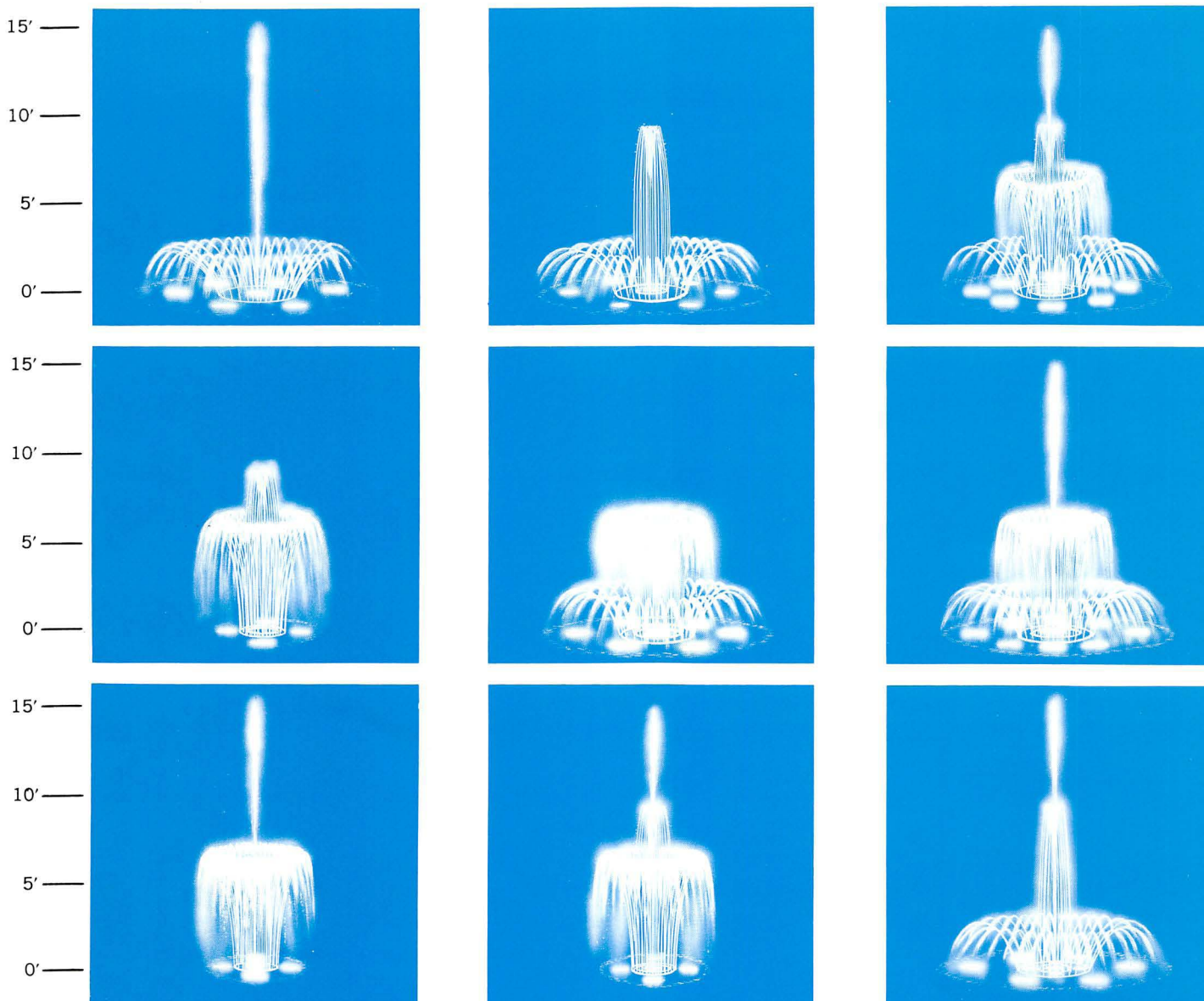


multi-effect fountains

Kit AH-400

This multi-effect fountain, employing 3 spray rings and a large aerating jet, forms a different water pattern as it builds to a well balanced pyramid design. Lighted by thirty-three 300 watt lights in banks of amber, blue, green and red. This fountain becomes a spectacular

display as it cycles through water and colored lighting sequences. Controlled by a remote sequence program unit complete with timer and mercury relays. The hydraulic source is a 10 H.P. dry pit type pump. Minimum pool size 25' diameter and 18" depth.



Kit AH-400

- A. 1 - AERATING JET - 15' HIGH.
- B. 1 - 48" DIAMETER SPRAY RING W/ADJUSTABLE JETS - 9' HIGH.
- C. 1 - 72" DIAMETER SPRAY RING W/ADJUSTABLE JETS - 6' HIGH.
- D. 1 - 96" DIAMETER SPRAY RING W/ADJUSTABLE JETS - 4' HIGH.
- E. 1 - 10 HP 230/460V - 3 ϕ PUMP.
- F. 1 - PUMP MOTOR STARTER.
- G. 1 - PUMP MANIFOLD COMPLETE WITH SOLENOID CONTROLLED HYDRAULIC VALVES FOR WATER PATTERN CHANGES.
- H. 1 - PUMP SUCTION SCREEN.
- I. 33 - 300' WATT UNDERWATER LIGHTS.
5 WITH AMBER LENS.
5 WITH RED LENS.
13 WITH BLUE LENS.
10 WITH GREEN LENS.
- J. 5 - BRASS UNDERWATER JUNCTION BOXES WITH WATERTIGHT PRESSURE BUSHINGS AND $\frac{3}{4}$ " NPT HUBS IN BOTTOM.
- K. 1 - FOUNTAIN CONTROL PANEL COMPLETE WITH SEQUENCE TIMER FOR WATER AND LIGHT PROGRAM CHANGES, RELAYS, TIME SWITCHES AND TOGGLE AND PILOT BOARD. PANEL PROVIDED COMPLETELY PRE-ASSEMBLED AND PRE-WIRED READY FOR SERVICE CONNECTIONS.
- 1 - WIND CONTROL UNIT.
- 1 - SET INSTALLATION DRAWINGS.

LAMPS NOT INCLUDED EXCEPT ON SPECIAL ORDER.

multi-effect fountains

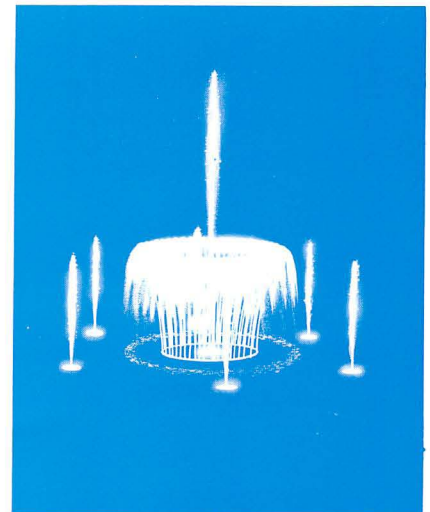
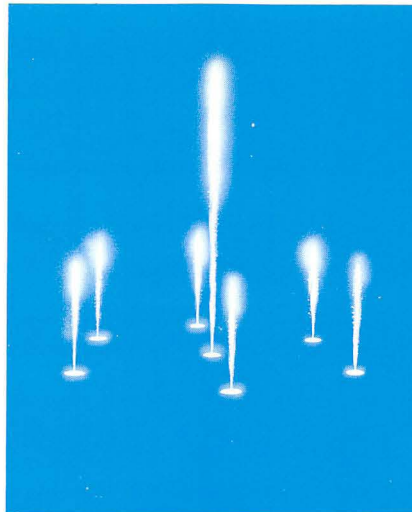
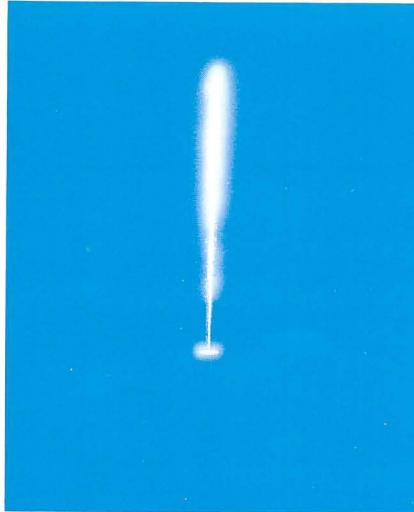


AQUA-HUE FOUNTAIN KITS

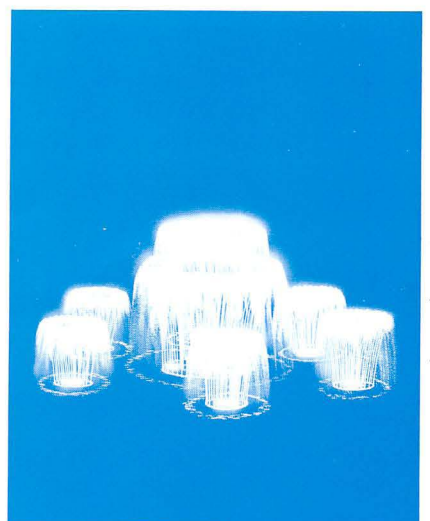
Kit AH-500

This fountain offers unlimited possibilities for installation in a small lake or more formal pool. The spacing of the peripheral effects can be expanded or contracted to satisfy aesthetic balance. The water sequence provides for progressive development of six distinct patterns while the programmed color light changes creates

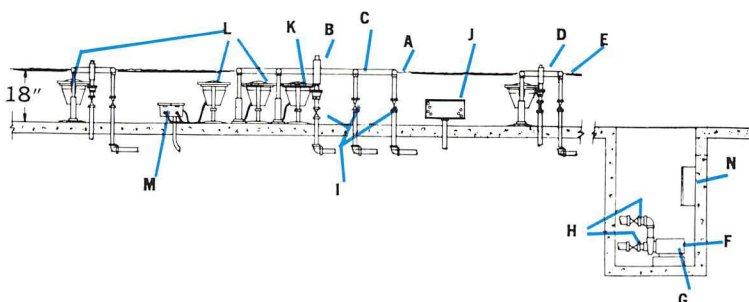
an infinite variety of light and water combinations. Ideal for a pond 50' in diameter or larger, with 18" depth. Deeper ponds require piers for lights and nozzle assemblies. All underwater equipment copper and bronze. Interconnecting piping not furnished. Dry pit pumping system.



— 25'
— 20'
— 15'
— 10'
— 5'
— 0'



— 25'
— 20'
— 15'
— 10'
— 5'
— 0'



Kit AH-500

SPRAY DIAMETER 18 Foot Max.
POOL DIAMETER 50 Feet Min.
REQ'D WATER DEPTH 18 Inches

- A. 1 - 48" DIAMETER SPRAY W/OUTSIDE FALL SPRAY PATTERN 6' HIGH.
- B. 1 - 2" AERATING JET - 25' HIGH.
- C. 1 - 24" DIAMETER SPRAY RING W/OUTSIDE FALL SPRAY PATTERN 8' HIGH.
- D. 6 - 1 1/4" AERATING JETS - 8' HIGH.
- E. 6 - 12" DIAMETER SPRAY RINGS W/OUTSIDE FALL SPRAY PATTERN 5' HIGH.
- F. 1 - 15 HP 230/460V-3 ϕ DRY TYPE PUMP.
- G. 1 - PUMP MOTOR STARTER.
- H. 1 - PUMP MANIFOLD COMPLETE W/SOLENOID CONTROLLED HYDRAULIC VALVES FOR WATER PATTERN CHANGES.
- I. 12 - BRASS HEIGHT CONTROL VALVES.
- J. 2 - PUMP SUCTION SCREENS.
- K. 9 - 500 WATT UNDERWATER LIGHTS.
- L. 42 - 300 WATT UNDERWATER LIGHTS.
- M. 13 - BRASS UNDERWATER JUNCTION BOXES W/WATERTIGHT PRESSURE BUSHINGS AND 3/4" NPT HUBS IN BOTTOM.
- N. 1 - FOUNTAIN CONTROL PANEL CONTAINING SEQUENCE TIMER FOR AUTOMATIC LIGHT COLOR AND WATER PATTERN CHANGES, RELAYS TOGGLE AND PILOT LIGHT BOARD AND TIME SWITCHES. PANEL TO BE PRE-ASSEMBLED AND PRE-WIRED READY FOR SERVICE CONNECTIONS.

- 1 - WIND CONTROL UNIT.
- 1 - SET OF INSTALLATION DRAWINGS.

LAMPS NOT INCLUDED EXCEPT ON SPECIAL ORDER.

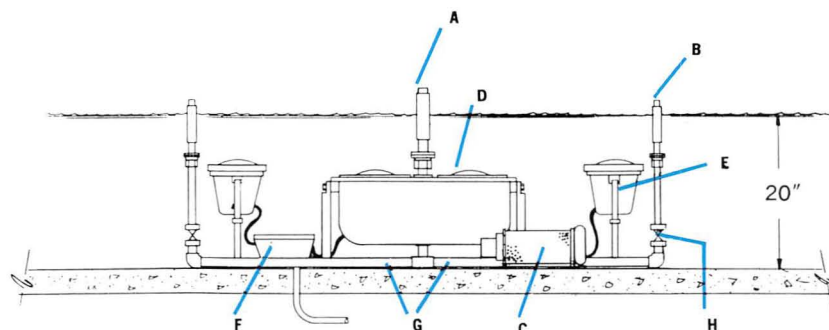
FOUNTAIN KIT AH-550 CB

A stately fountain formed by 5 columns of aerated water. The center spire is 8' high, and the 4 peripheral spires are 6' high. The water pattern is constant while a AQUA-HUE color blender, located at the center of the effect, provides constant changing of light color. A 150 watt light is positioned at the base of each peripheral aerator providing constant colored light at these points. Each of these four lights may be furnished with a different color lens if desired. For installation in a pool not less than 15' diameter, 20" deep. Complete with a $\frac{3}{4}$ H.P. bronze submersible pump. Two timer units to automatically switch pump and lighting circuits furnished.

SPRAY DIAMETER 5 Feet Maximum
 POOL DIAMETER 12 Feet Minimum
 REQUIRED WATER DEPTH 22 Inches

- A. 1 - LARGE AERATING JET FOR CENTER SPRAY EFFECT - 8' HIGH.
 B. 4 - MEDIUM AERATING JETS FOR PERIPHERAL SPRAY EFFECT - 6' HIGH.
 C. 1 - $\frac{3}{4}$ HP BRONZE SUBMERSIBLE PUMP WITH COPPER SUCTION SCREEN.

- D. 1 - AQUA-SCOPE COLOR BLENDER.
 E. 4 - 150 WATT UNDERWATER LIGHTS WITH GREEN LENS FOR PERIPHERAL JET ILLUMINATION.
 F. 1 - BRASS UNDERWATER JUNCTION BOX WITH WATERTIGHT PRESSURE BUSHINGS AND $\frac{3}{4}$ " NPT HUB IN BOTTOM.
 G. 1 - COMPLETE COPPER MANIFOLD.
 H. 5 - BRASS HEIGHT CONTROL VALVES.
 2 - TIME CLOCK SWITCHES.
 1 - SET INSTALLATION DRAWINGS.

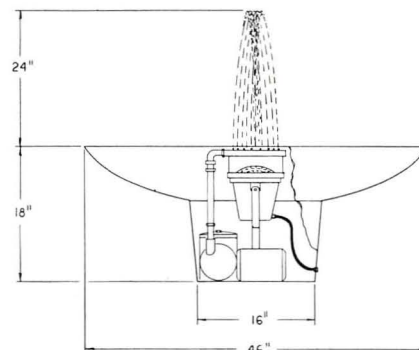
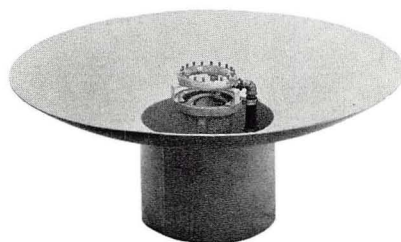


PORTABLE FOUNTAINS

These portable fountains are completely self contained — you need only to fill them with water and attach the electric cord to any 120 Volt convenient outlet. They can be installed free standing or recessed to bowl edge. The bowls are formed of heavy gauge tank steel and finished with a special epoxy coating. The exterior is matte black and interior marine blue.

SCP 106 SINGLE BOWL PORTABLE FOUNTAIN

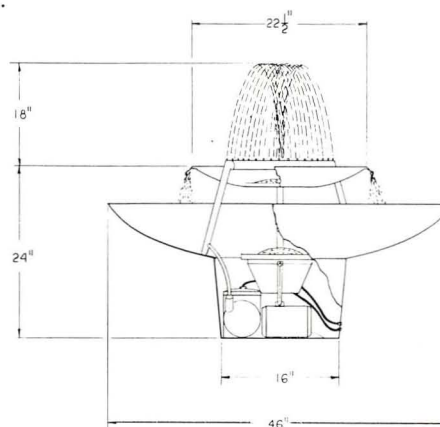
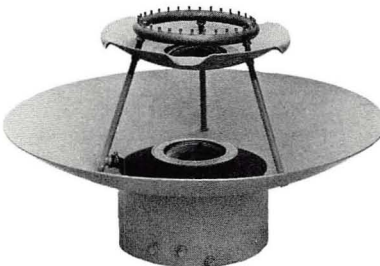
Bowl — 46" Diameter
 Sump — 16" Diameter
 Height — 18" Overall
 Spray Ring — 8" Diameter red brass pipe
 Fixed jets inside fall 24" high pattern
 1/10 H.P. Submersible Pump and Screen
 75 Watt cast bronze light with color lens
 Specify color — Amber, Blue, Green or Red



SCP 114 2-TIER CASCADE PORTABLE FOUNTAIN

The cascading water falls reflect the golden amber light while the upper water spray is a deep wine red.

Lower Bowl — 46" Diameter
 Upper Bowl — 22 1/2" Diameter
 Sump — 16" Diameter
 Height — 24" Overall
 Spray Ring — 14" Diameter red brass pipe
 Fixed jets inside fall 18" high pattern
 1/10 H.P. submersible pump and screen
 300 Watt cast bronze light with amber lens
 Upper bowl lens — Red



LAMPS NOT INCLUDED EXCEPT ON SPECIAL ORDER.



FOUNTAIN COMPONENTS



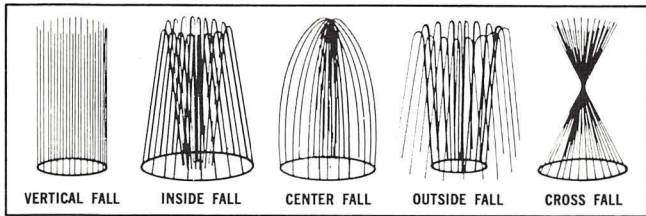
Every fountain installation, large or small, is composed of a number of component parts put together to produce the desired effect. The following pages show the Hydrel line of fountain components for those who wish to create their own fountain or for ordering separate parts. All Hydrel fountain components are manufactured of the finest quality materials to give years of trouble free fountain enjoyment.

FOUNTAIN SPRAY RINGS

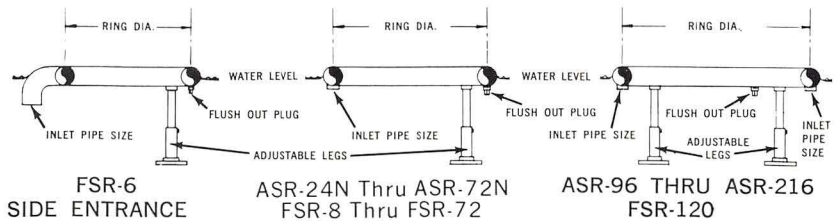
Hydrel spray rings are constructed of the finest red brass pipe and sized to provide maximum hydraulic efficiency. Fitted with precision taper bored brass jets and brass flush out plug. Complete with adjustable height legs, connecting hose coupling and clamps. Adjustable jet spray ring models permit angle adjustment of jets up to 20° from vertical.

IMPORTANT. When ordering fixed jet rings, specify water pattern, i.e.: center fall, outside fall, etc. and state maximum height of water pattern from ring.

Hydrel custom builds distribution rings to any dimension and form for special application, and to accommodate any type of nozzle.



Illustrated above are five water patterns most commonly used. When ordering, designate by name pattern desired.



These line drawings illustrate connection details of Hydrel spray rings. Maintained water level should be at center line of ring.

FOUNTAIN SPRAY RINGS — FIXED POSITION JET

Catalog No.	Ring Dia.	Pipe Size	No. Jets	Inlet Size	Jet Orifice	Requirements	SPRAY HEIGHT									
							2'	3'	4'	5'	6'	8'	10'	12'	14'	16'
FSR-6	6"	3/4"	14	3/4"	.093	GPM Head	5 4	6 5	7 6	8 8	10 10					
FSR-8	8"	3/4"	22	3/4"	.093	GPM Head	7 4	8 5	9 6	10 8	12 10					
FSR-12	12"	1"	24	1"	.093	GPM Head	7.5 4	9 5	10 6	12 8	14 10					
FSR-14	14"	1 1/4"	32	1 1/4"	.093	GPM Head	8 4	10 5	12 6	14 8	16 10					
FSR-16	16"	1 1/4"	38	1 1/4"	.093	GPM Head	9 4	11 5	14 6	16 8	19 10					
FSR-18	18"	1 1/4"	42	1 1/4"	.093	GPM Head	10 4	13 5	16 6	18 8	22 10	11	15	18		
FSR-24	24"	1 1/4"	56	1 1/4"	.093	GPM Head	11 4	15 5	18 6	21 8	24 10	28 11	30 15	33 18		
FSR-30	30"	1 1/4"	69	1 1/4"	.093	GPM Head	15 4	20 5	24 6	28 8	30 10	34 11	38 15	41 18	48 22	54 26
FSR-36	36"	1 1/4"	83	1 1/4"	.093	GPM Head	18 4	23 5	29 6	32 8	35 10	41 11	44 15	48 18	57 22	63 26
FSR-48	48"	1 1/4"	110	1 1/4"	.093	GPM Head	24 4	31 5	39 6	43 8	47 10	55 11	59 15	65 18	77 22	85 26
FSR-54	54"	1 1/4"	123	1 1/4"	.093	GPM Head	28 4	37 5	45 6	50 8	54 10	60 11	66 15	70 18	84 22	94 26
FSR-60	60"	1 1/4"	138	1 1/4"	.093	GPM Head	31 4	43 5	50 6	55 8	59 10	65 11	71 15	76 18	89 22	100 26
FSR-72	72"	1 1/2"	124	1 1/2"	.125	GPM Head	40 4	49 5	60 6	68 8	76 10	87 11	95 15	108 18	120 22	135 26
FSR-120	120"	1 1/2"	206	1 1/2"	.125	GPM Head	78 4	98 5	128 6	148 8	169 10	189 11	201 15	220 18	240 22	260 26

FOUNTAIN SPRAY RINGS — ADJUSTABLE JET

The adjustable jets permit an adjustment of up to 20° from vertical. This enables the fountain pattern to be changed at will.



Used on ASR-24N
Thru ASR-72N



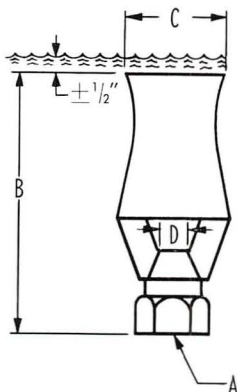
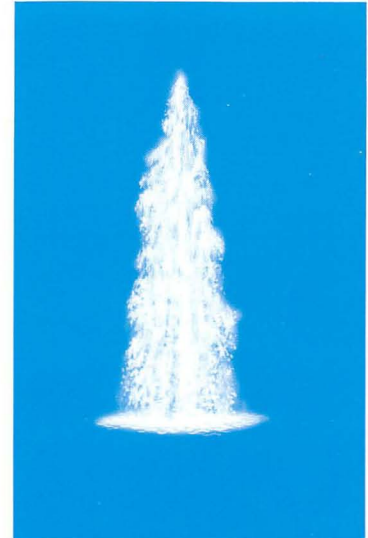
Used on ASR-96
Thru ASR-216

Cat. No.	Ring Dia.	Pipe Size	No. Jets	Jet Orifice	Requirements	SPRAY HEIGHT												
						3'	4'	5'	6'	7'	8'	9'	10'	11'	12'	13'	14'	15'
ASR-24N	24"	1 1/4"	38	.110	GPM Head	16 5	20 6	22 8	24 9	27 11	29 12	31 14	33 15	35 17	37 18	39 20	41 21	44 23
ASR-30N	30"	1 1/4"	48	.110	GPM Head	20 5	24 6	27 8	30 9	33 11	36 12	39 14	42 15	45 17	47 18	49 20	51 21	53 23
ASR-36N	36"	1 1/4"	56	.110	GPM Head	24 5	29 6	32 8	36 9	39 11	42 12	46 14	49 15	52 17	55 18	58 20	61 21	64 23
ASR-48N	48"	1 1/4"	75	.110	GPM Head	32 5	38 6	43 8	48 9	53 11	58 12	62 14	65 15	70 17	75 18	80 20	84 21	88 23
ASR-60N	60"	1 1/4"	95	.110	GPM Head	40 5	49 6	55 8	61 9	67 11	73 12	78 14	83 15	88 17	93 18	98 20	103 21	108 23
ASR-72N	72"	1 1/4"	114	.110	GPM Head	49 5	58 6	66 8	73 9	80 11	87 12	94 14	100 15	107 17	114 18	121 20	128 21	135 23
ASR-96	96"	2"	54	.172	GPM Head	75 5	81 6	87 8	92 9	97 11	102 12	108 14	113 15	119 17	130 18	135 20	146 21	157 23
ASR-120	120"	2"	60	.203	GPM Head	114 5	120 6	132 8	138 9	150 11	156 12	168 14	174 15	186 17	198 18	210 20	216 21	222 23
ASR-144	144"	3"	72	.203	GPM Head	137 5	144 6	158 8	167 9	180 11	187 12	201 14	209 15	223 17	238 18	252 20	260 21	266 23
ASR-168	168"	3"	72	.203	GPM Head	137 5	144 6	158 8	167 9	180 11	187 12	201 14	209 15	223 17	238 18	252 20	260 21	266 23
ASR-192	192"	3"	72	.234	GPM Head	209 5	216 6	230 8	238 9	252 11	266 12	281 14	302 15	317 17	338 18	360 20	367 21	382 23
ASR-216	216"	3"	72	.234	GPM Head	209 5	216 6	230 8	238 9	252 11	266 12	281 14	302 15	317 17	338 18	360 20	367 21	382 23

CASCADE JETS

The cascade nozzle produces an unusual, highly aerated, conical water pattern. The force of the line water sustains the central core of the cone while the outer surface gradually tapers from the broad base to the upper peak. The frothy texture of the plume creates a beautiful effect and lends itself to dramatic lighting.

The location of the nozzle mount (top of jet) in relation to the surface of the water is critical and it should be positioned with $\pm \frac{1}{2}$ " below surface for best operation.



CATALOG NUMBER	DIMENSIONS			
	A	B	C	D
CAS-75	3/4" NPT	4-7/8"	2"	27/64"
CAS-150	1-1/2" NPT	9"	3-1/2"	9/16"
CAS-300	3" NPT	14"	7"	1-1/4"

CATALOG NUMBER	23' Head			35' Head			46' Head			58' Head			69' Head			81' Head		
	Ht.	Dia.	GPM	Ht.	Dia.	GPM	Ht.	Dia.	GPM	Ht.	Dia.	GPM	Ht.	Dia.	GPM	Ht.	Dia.	GPM
CAS-75	24"	12"	16	36"	18"	20	4'6"	24"	23	6'	30"	25	7'6"	36"	28	9'	4'	30
CAS-150	3'6"	18"	32	5'6"	24"	39	8'	30"	45	11'	3'6"	50	13'	4'0"	55	15'	5'0"	60

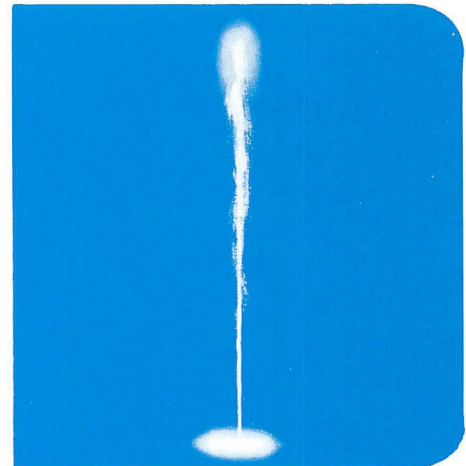
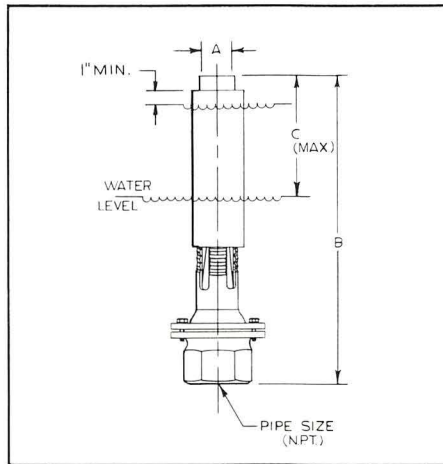
CATALOG NUMBER	42' Head			49' Head			63' Head			83' Head			102' Head			125' Head		
	Ht.	Dia.	GPM	Ht.	Dia.	GPM	Ht.	Dia.	GPM	Ht.	Dia.	GPM	Ht.	Dia.	GPM	Ht.	Dia.	GPM
CAS-300	8'	3'6"	180	10'	4'	200	15'	5'	230	20'	6'	280	25'	7'	320	30'	8'	345



AERATING JET, ADJUSTABLE

Hydrel aerating jet nozzles are designed to produce columns of highly aerated water with a frothy effect. High light reflection characteristic of stream is ideal for lighted fountain. The aerating jets are made of cast bronze and heavy brass stock, machined to close tolerances. The inner nozzle has an internal tapered bore.

Precision ball socket swivel base permits universal adjustment of 15° from vertical.



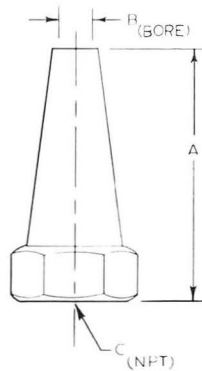
CATALOG NO.	A DIM.	B DIM.	C DIM.	PIPE SIZE	REQUIREMENTS	SPRAY HEIGHT															
						2'	3'	4'	5'	6'	8'	10'	12'	15'	20'	25'	30'	35'	40'	45'	50'
AJ-500	1/2"	7 1/2"	2 1/2"	1/2"	GPM	3.5	4	4.5	5	5.5	6	8									
					HD	15	18	24	31	35	46	55									
AJ-750	3/4"	8 1/2"	2 3/4"	3/4"	GPM	4.5	5.5	6	7	8	9	10									
					HD	15	18	20	24	29	35	44									
AJ-1000	1"	10 1/2"	3 1/2"	1"	GPM			9.5	10	11	12	14	15								
					HD			24	29	31	39	48	58								
AJ-1250	1 1/4"	12 1/2"	4"	1 1/4"	GPM			10	12	14	17	19	21								
					HD			15	18	24	41	48	59								
AJ-1500	1 1/2"	14 1/2"	5"	1 1/2"	GPM				21	23	25	28	31	34	37	58	71	80			
					HD				18	24	32	41	46	55	69	83	89	100			
AJ-2000	2"	17 1/4"	5 1/4"	2"	GPM				22	25	34	40	44	50	58	62	70	78	85		
					HD				24	30	38	44	52	60	72	80	88	96	104		
AJ-2250	2 1/4"	19"	5 1/2"	2 1/2"	GPM					28	35	40	44	51	61	72	88	93	100		
					HD					28	35	41	45	56	69	80	89	95	101		
AJ-2500	2 1/2"	20 3/4"	6 1/2"	2 1/2"	GPM					42	52	60	64	70	90	98	106	112	118	125	145
					HD					29	39	45	52	60	75	86	91	99	103	107	114
AJ-2750	2 3/4"	21 1/2"	8"	3"	GPM					58	65	69	73	90	100	115	135	148	170	177	180
					HD					33	43	46	51	60	71	80	88	97	105	110	115



SMOOTH BORE JETS

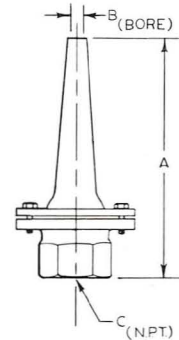
FIXED AND ADJUSTABLE POSITION

A series of heavy duty smooth taper bore nozzles designed to produce a high straight stream of water with a minimum tearing within designated heights. Made of bronze and brass. Inner bore surface high gloss finish. Ball and socket swivel base (on adjustable models) permits universal adjustment 15° from vertical.



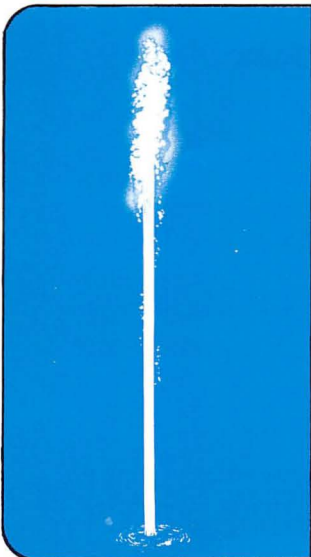
Fixed Smooth Bore

CAT. NO.	A	B	C
FSB-10	4 1/2"	3/8"	1"
FSB-15	5 1/2"	5/8"	1 1/2"
FSB-20	6 1/2"	7/8"	2"
FSB-30	10 1/2"	1 1/8"	3"
FSB-40	11 1/2"	1 1/2"	4"
FSB-50	13 1/2"	2"	5"



Adjustable Smooth Bore

CAT. NO.	A	B	C
ASB-100	5 1/4"	3/8"	1"
ASB-150	6 3/4"	5/8"	1 1/2"
ASB-200	8"	7/8"	2"
ASB-300	11 1/4"	1 1/8"	3"



Adjustable Smooth Bore Cat. No.	Fixed Smooth Bore Cat. No.	Flow Charact.	SPRAY HEIGHT									
			10'	20'	30'	40'	50'	60'	70'	80'	90'	100'
ASB-100	FSB-10	GPM	12	18	22	24						
		HD	14	27	40	53						
ASB-150	FSB-15	GPM	30	45	56	66						
		HD	14	27	40	53						
ASB-200	FSB-20	GPM	52	81	104	120	135					
		HD	14	27	40	53	66					
ASB-300	FSB-30	GPM	62	103	145	180	205	225	240			
		HD	14	27	40	53	66	80	93			
	FSB-40	GPM	105	185	250	305	350	385	405	445	465	
		HD	14	27	40	53	66	80	93	105	120	
	FSB-50	GPM	185	210	440	525	600	670	740	785	825	885
		HD	14	27	40	53	66	80	93	105	120	136



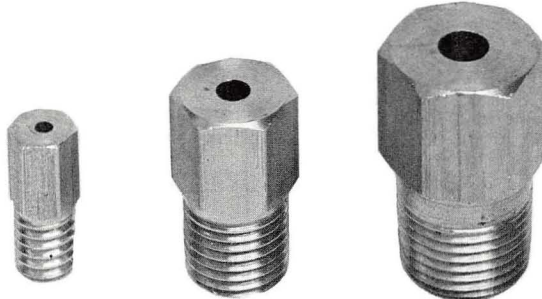
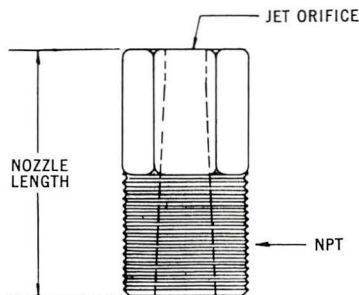
PN TYPE JETS

The "PN" type jets are small, inexpensive tapered smooth bore nozzles designed for use with spray rings or other installations where straight clear columns of water at heights not to exceed 12' are desired.

NOTE. The maximum efficient height will vary with the orifice size and for best results the larger "PN" jets should be used for higher streams.

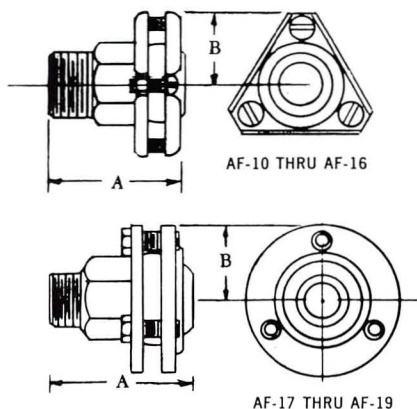
Cat. No.	Pipe Conn. N.P.T.	Orifice Dia.	Nozzle Length	Requirements	Spray Height*					
					2'	4'	6'	8'	10'	12'
PN-40	1/4"	5/32"	1"	GPM	.63	.95	1.2	1.3	1.5	1.7
				Head	2.0	5.0	8.0	10.0	13.0	16.0
PN-70	1/4"	13/64"	1"	GPM	1.1	1.7	2.1	2.4	2.7	2.9
				Head	2.0	5.0	8.0	10.0	13.0	15.5
PN-100	3/8"	15/64"	1 1/4"	GPM	1.6	2.4	2.9	3.4	3.8	4.1
				Head	2.0	5.0	8.0	10.0	13.0	15.5
PN-120	3/8"	1/4"	1 1/4"	GPM	1.9	2.8	3.4	4.0	4.5	4.8
				Head	2.0	5.0	8.0	10.0	13.0	15.0
PN-200	1/2"	2 1/64"	1 1/2"	GPM	3.2	4.7	5.7	6.5	7.4	8.1
				Head	2.0	5.0	8.0	10.0	13.0	15.0
PN-350	3/4"	7/16"	2"	GPM	5.5	7.8	10.0	11.4	13.0	14.1
				Head	2.0	4.0	6.0	9.0	10.0	12.7
PN-1000	1"	3/4"	2 3/4"	GPM	15.8	21	26	31	34	37
				Head	2.0	4.0	6.0	9.0	10.0	13.0

*Approximate height in still air



ADJUSTABLE FLANGES

The adjustable flanges are designed for use with the "PN" jets where universal adjustability is required. Maximum angle 20° from vertical axis.

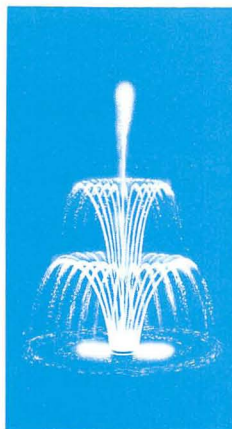
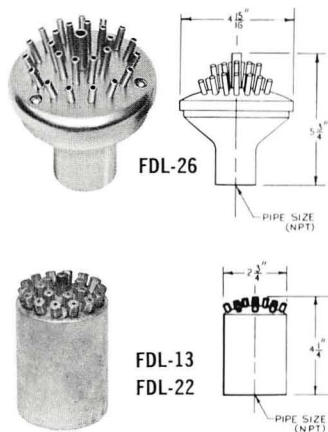


Catalog Number	Inlet NPT	Outlet NPT	Dimension	
			A	B
AF-10	1/4" Male	1/8" Female	1 1/4"	3/4"
AF-11	1/4" Male	1/4" Female	1 1/16"	1"
AF-12	3/8" Male	1/4" Female	1 1/16"	1"
AF-13	3/8" Male	3/8" Female	1 1/16"	1"
AF-14	1/2" Male	3/8" Female	1 1/16"	1"
AF-15	1/2" Male	1/2" Female	2 3/8"	1 1/2"
AF-16	3/4" Male	3/4" Female	3 1/2"	1 1/2"
AF-17	1" Male	1" Female	3 1/2"	1 3/16 Rad.
AF-18	1 1/4" Male	1 1/4" Female	5 1/8"	1 3/16 Rad.
AF-19	1 1/2" Male	1 1/4" Female	5 1/4"	1 3/16 Rad.



FLEUR-de-LIS JET

The FLEUR-de-LIS, or Flower Jet, produces a pleasing graceful multi-tier pattern that is very effective either singly or when used as a part of a more elaborate fountain design. Constructed of brass and bronze. Available in two sizes.



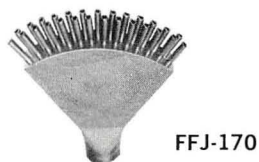
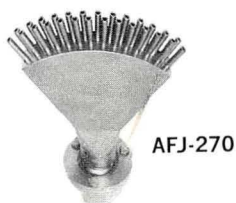
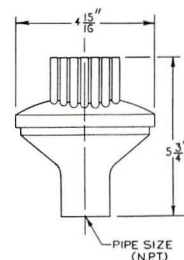
CATALOG NO.	PIPE SIZE	NO. OF JETS	REQUIREMENTS	SPRAY HEIGHT									
				1'	2'	3'	4'	5'	6'	7'	8'	9'	10'
FDL-13	3/4"	13	GPM	3	5	7	8	10	11	12	13	15	17
			Head	2.5	4	5	10	12	14	15	18	20	22
			Spray Dia.	2'	3'	4'	7'	9'	10'	11'	13'	15'	17'
FDL-22	3/4"	22	GPM	7	9	10	12	13	14	15	16	17	19
			Head	5	8	11	12	14	16	17	19	23	25
			Spray Dia.	3'	5'	7'	8'	10'	11'	12'	14'	16'	18'
FDL-26	1"	26	GPM			16	19	23	26	28	30	34	38
			Head			5	6	7	8	10	12	14	17
			Spray Dia.			5'	6'	7'	8'	9'	11'	12'	14'

NOTE: If smaller spray diameter is desired, jet angles can be altered to meet specifications on special order without additional charge.

MULTI JET HEAD

Same basic design as FDL-26 FLEUR-de-LIS except that 35 jets are positioned vertically to form a cluster and produce a compact multi-stream column of water. Copper and bronze construction.

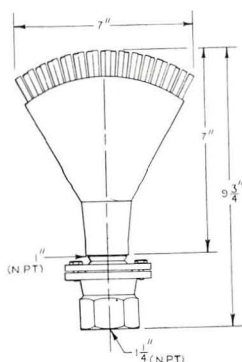
CATALOG NO.	PIPE SIZE	NO. OF JETS	REQUIREMENTS	SPRAY HEIGHT									
				1'	2'	3'	4'	5'	6'	7'	8'	9'	10'
MJH-350	1"	35	GPM	20	23	28	33	35	38	40	42	45	48
			HEAD	3	4	6	7	9	10	12	14	16	20



FAN JET

This unusual nozzle has many applications either as a single effect or as a part of a more elaborate pattern. Often used in multiples as a base for higher rising center jet plumes, its adjustability from a parallel axis affords development of many interesting patterns.

PERFORMANCE CHART AFJ-270, FFJ-170

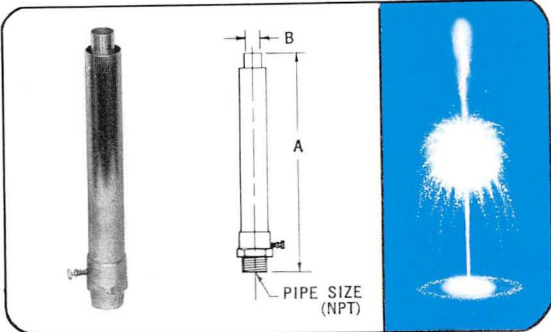


HEIGHT OF FAN JET	FAN SPRAY WIDTH	G.P.M.	HEAD	THROW IN FEET	DEGREE FROM HORIZONTAL
18"	8'	25	5	5	30 Degrees
24"	10'	30	10	10	30 Degrees
30"	12'	35	15	15	30 Degrees
24"	8'	25	5	5	45 Degrees
36"	16'	30	10	10	45 Degrees
48"	20'	35	15	15	45 Degrees
36"	15'	30	10	5	60 Degrees
72"	25'	40	15	10	60 Degrees



EXPLODING JET

The Hydrel exploding jet is designed to momentarily interrupt a stream of water and as it falls back, the ascending stream explodes against it causing it to burst in midair. Very effective when lighted with amber or red light.

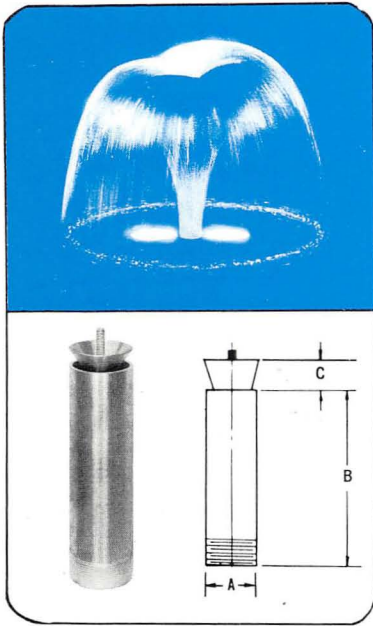


CAT. NO.	PIPE SIZE	A DIM.	B DIM.	SPRAY HEIGHT							
				REQ.	2'	3'	4'	5'	10'	12'	15'
EJ-75	3/4"	5 3/4"	3/8"	GPM	2.5	3.5	4	5			
				HD	5	7	8	10			
				Burst Ht.	12	18	24	30			
EJ-100	1"	11 1/4"	3/4"	GPM				12	16	18	21
				HD				5	12	16	19
				Burst Ht.				12	24	36	36

MUSHROOM JET

The mushroom jet produces a clear, unbroken sheet of water falling in a circular pattern. When lighted with colored lights or Aqua-Hue Color Blender, the sparkling iridescent sheen creates a most dramatic effect. Noz-

zles available in sizes 1 1/2", 2", 3", 4" and 6" with 25 or 35 degree cones. Cones are adjustable for control of water density. Copper and bronze construction.



Cat. No.	Plug	'A' Dim.	'B' Dim.	'C' Dim.	Charac- teristics	SPRAY DIAMETER													
						1'	2'	3'	4'	5'	6'	7'	8'	9'	10'	12'	14'	16'	
MJ-1525	25°	1½"	6"	1⅛"	GPM	18	25												
					Spray Ht.	14"	18"												
MJ-1535	35°	1½"	6"	1"	GPM		25		35										
					Spray Ht.		12"		20"										
MJ-2025	25°	2"	8"	1¼"	GPM		35		45										
					Spray Ht.		14"		24"										
MJ-2035	35°	2"	8"	1"	GPM			40			60								
					Spray Ht.			12"			20"								
MJ-3025	25°	3"	12"	1⅝"	GPM				100					160					
					Spray Ht.				24"					40"					
MJ-3035	35°	3"	12"	1⅜"	GPM					130					170				
					Spray Ht.					20"					36"				
MJ-4025	25°	4"	12"	1⅝"	GPM						170				240				
					Spray Ht.						30"				48"				
MJ-4035	35°	4"	12"	1⅜"	GPM							190				250			
					Spray Ht.							24"				40"			
MJ-6025	25°	6"	18"	1⅝"	GPM								220			300			
					Spray Ht.							36"				54"			
MJ-6035	35°	6"	18"	1¼"	GPM									250			350		
					Spray Ht.									30"				48"	

NOTE: Head in feet is equal to spray height x 2.

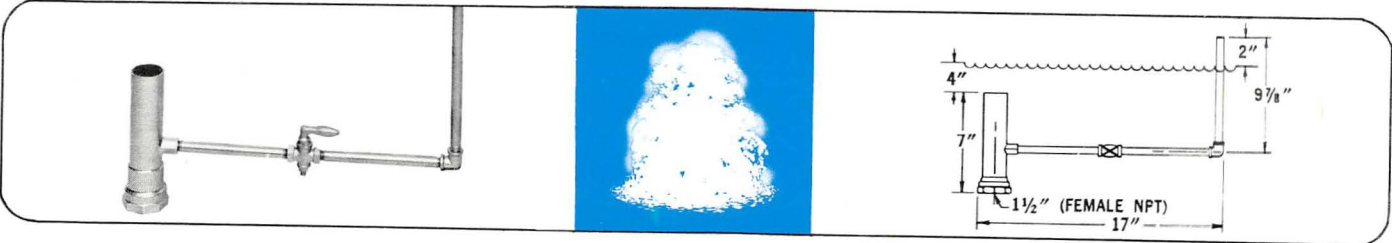
FULL
UNBROKEN
SHEET

FULL
BROKEN
SHEET

BUBBLER JET

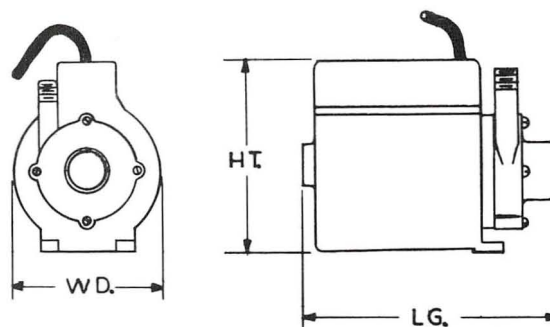
This unusual jet produces mounds of highly aerated water and is often positioned around the periphery of higher water plumes, or is used separately in fountains where there is a continuing wind problem.

CATALOG NO.	PIPE SIZE (FEM)	SPRAY HEIGHT	SPRAY DIA.	G.P.M.	HEAD	JET LENGTH
ABJ-150	1 1/2"	18"	18"	50	10'	7"
ABJ-300	3"	42"	30"	125	25'	9 1/2"



SMALL FRACTIONAL HORSEPOWER SUBMERSIBLE PUMPS - SERIES ESP

These small fractional horsepower submersible pumps are completely encapsulated in epoxy to protect them against corrosion. A very durable pump assembly ideally suited for smaller fountains. Pumps are provided with brass suction screen.



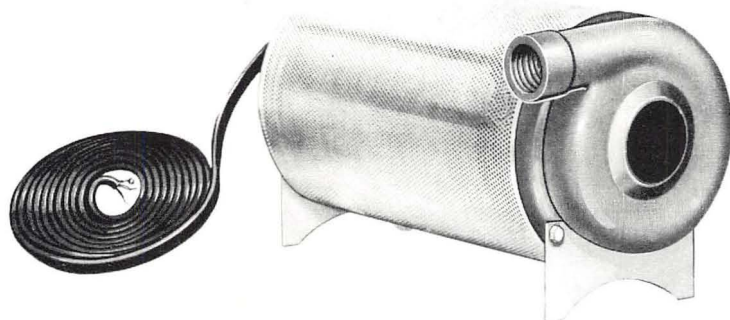
ESP SUBMERSIBLE PUMP SPECIFICATIONS

MODEL NO.	CONNECTORS		ELECTRICAL H.P. WATTS AMPS			G.P.H. AT LISTED HEAD							MAX. HEAD	P.S.I. GAGE	DIMENSIONS			PACK WT.
	INLET	OUTLET				1 FT.	3 FT.	5 FT.	6 FT.	12 FT.	18 FT.	24 FT.			HT.	WD.	LG.	
ESP-2M	3/8 FPT 3/4 MPT	1/4 MPT	1/35	60	1.1	300	260	210	195	45	0		13 FT.	5.7	4	4 1/4	6	5 LBS.
ESP-3M	1" FPT	1/2 MPT 3/4 O.D.	1/20	122	2.35	510	490	405	385	180	0		17 FT.	7.5	4 3/4	4 1/4	7 1/4	6.5 LBS.
ESP-4M	1" FPT	1/2 MPT 3/4 O.D.	1/12	145	1.4	750	640	580	560	390	200	0	24 FT.	10.5	5 1/2	4	8 1/2	12 LBS.
ESP-5M	1" FPT	1/2 MPT 3/4 O.D.	1/8	195	1.7	1000	800	710	680	535	440	340	32 FT.	14	7	5 1/4	9	15.5 LBS.

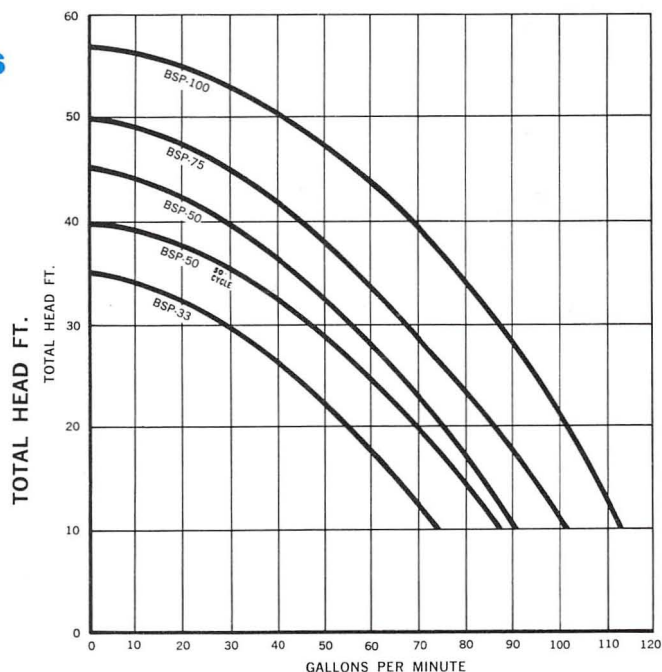
Non-Corrosive Now With 6 Ft.-3 Wire "UL" Cord and Molded Plug, 120 Volts 60 Cycle.

HEAVY DUTY FRACTIONAL HORSEPOWER SUBMERSIBLE PUMPS SERIES BSP

The superior performance of this heavy duty all bronze and brass submersible pump has been established over many years of demanding service. Designed for continuous operation.

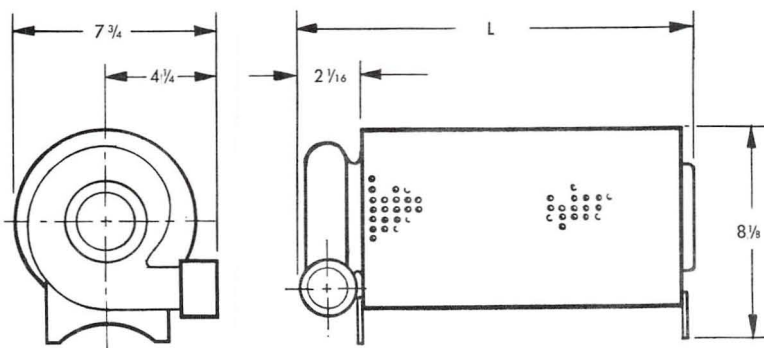


For submersible pumps of greater capacity contact the factory.



BSP SERIES BRONZE SUBMERSIBLE PUMPS

Cat. No.	H. P.	Voltage	Length "L"
BSP-33	1/3	115	14 7/8"
BSP-50	1/2	115	14 7/8"
BSP-50C	1/2	230-50C	15 3/4"
BSP-75A	3/4	115	15 3/4"
BSP-75B	3/4	230	
BSP-100	1	230	15 3/4"

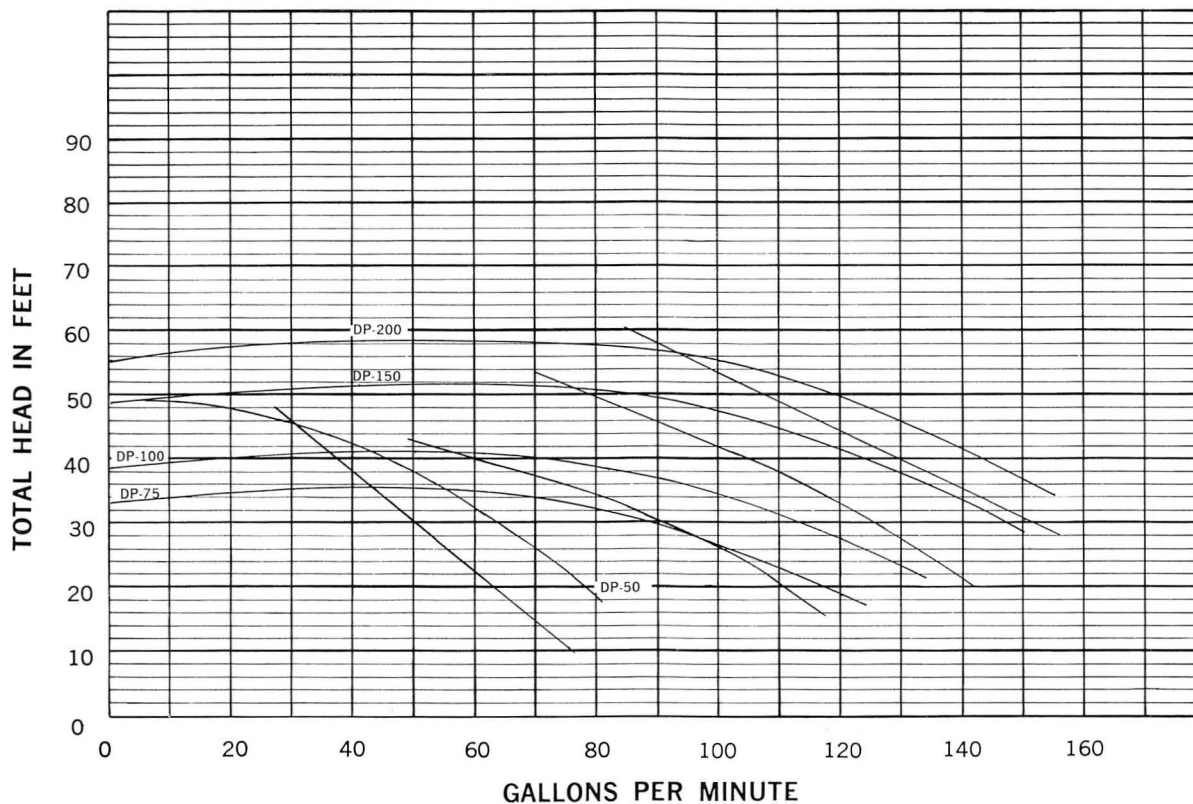




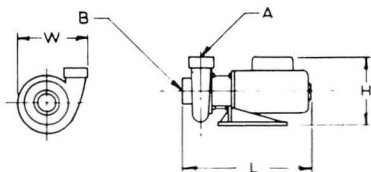
SINGLE STAGE END SUCTION CENTRIFUGAL DRY TYPE PUMPS SERIES DP

Heavy duty industrial pumps designed to maintain top performance under continuous full load operation. Because of limited space, only a few of the large selection of available pumps of different sizes and characteristics are listed. For additional information, please write the Factory.

NOTE: ALL SINGLE PHASE 60 CYCLE pump motors $\frac{1}{2}$ H.P. through 2 H.P., listed here, do not require external motor starters. All 3 H.P. through 10 H.P., single or 3 phase and all $\frac{1}{2}$ H.P. through 3 H.P., 3 phase, require external motor starters. Where they are required, magnetic motor starters complete with overload heaters, and "Start-Stop" push button, housed in general purpose NEMA No. 1 enclosure are furnished as standard equipment, at additional cost.



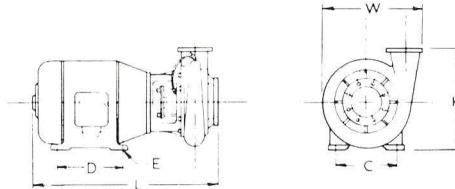
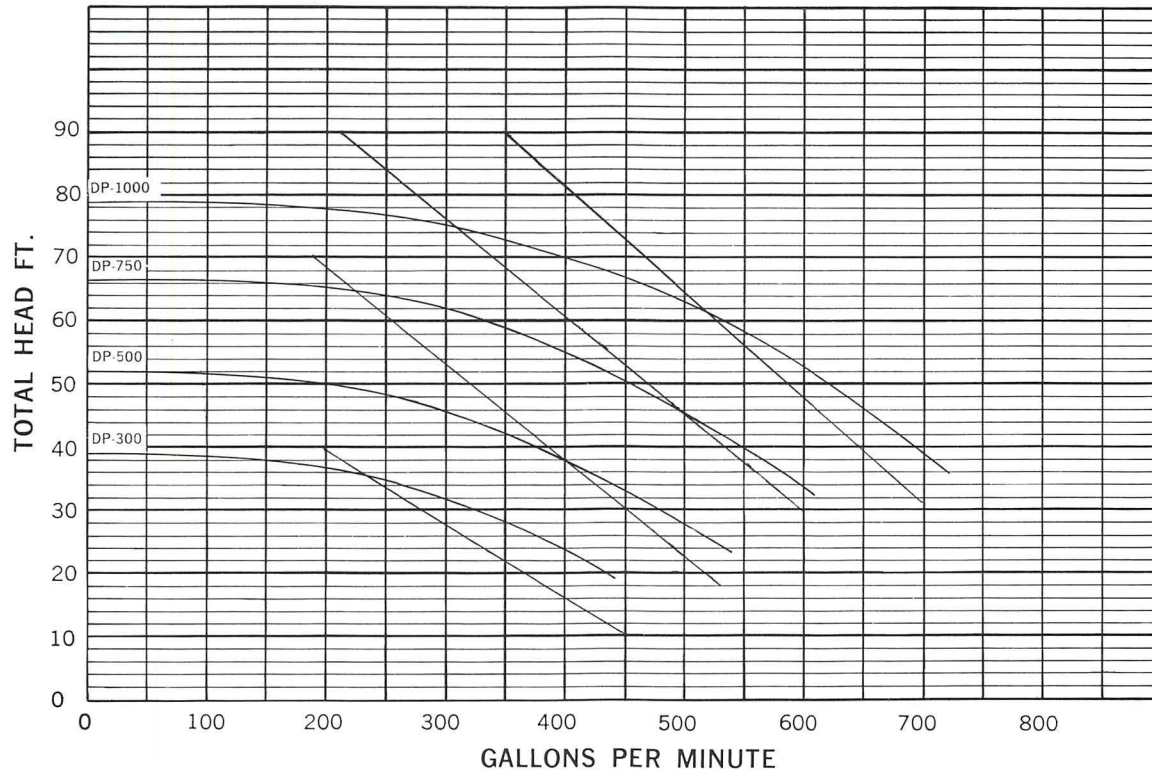
DP-50, 75, 100, 150 & 200 DRY PUMPS



Cat. No.	H.P.	Voltage	Phase ϕ	Discharge A	Suction B	L	W	H
DP-50 A	$\frac{1}{2}$	115/230	1	$1\frac{1}{2}$ "	2"	$14\frac{5}{16}$ "	$8\frac{1}{2}$ "	$8\frac{5}{16}$ "
DP-50 B		230/460	3					
DP-75 A	$\frac{3}{4}$	115/230	1	$1\frac{1}{2}$ "	2"	$14\frac{5}{16}$ "	$8\frac{1}{2}$ "	$8\frac{5}{16}$ "
DP-75 B		230/460	3					
DP-100 A	1	115/230	1	2"	$2\frac{1}{2}$ "	$16\frac{5}{16}$ "	8"	$9\frac{3}{8}$ "
DP-100 B		230/460	3					
DP-150 A	$1\frac{1}{2}$	115/230	1	2"	$2\frac{1}{2}$ "	$16\frac{5}{16}$ "	8"	$9\frac{3}{8}$ "
DP-150 B		230/460	3					
DP-200 A	2	115/230	1	2"	$2\frac{1}{2}$ "	$16\frac{5}{16}$ "	8"	$9\frac{3}{8}$ "
DP-200 B		230/460	3					



SINGLE STAGE END SUCTION CENTRIFUGAL DRY TYPE PUMPS SERIES DP



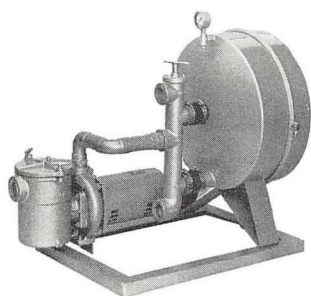
DP 300, 500, 750 & 1000 DRY PUMPS

Cat. No.	H.P.	Voltage	Phase ϕ	Dis- charge A	Suc- tion B	Mtg. Dim.			L	W	H
						C	D	E			
A DP-300 B	3	115/230	1	3"	4"	8 $\frac{1}{2}$ "	5 $\frac{1}{2}$ "	1 $\frac{3}{32}$ "	25"	13"	12 $\frac{1}{8}$ "
		230/460	3	3"	4"	8 $\frac{1}{2}$ "	5 $\frac{1}{2}$ "	1 $\frac{3}{32}$ "	25"	13"	12 $\frac{1}{8}$ "
A DP-500 B	5	230	1	3"	4"	8 $\frac{1}{2}$ "	7"	1 $\frac{3}{32}$ "	26"	13"	15 $\frac{5}{16}$ "
		230/460	3	3"	4"	8 $\frac{1}{2}$ "	7"	1 $\frac{3}{32}$ "	26"	13"	15 $\frac{5}{16}$ "
A DP-750 B	7 $\frac{1}{2}$	230	1	3"	4"	10"	8 $\frac{1}{4}$ "	1 $\frac{7}{32}$ "	27 $\frac{1}{2}$ "	13"	15 $\frac{5}{16}$ "
		230/460	3	3"	4"	10"	8 $\frac{1}{4}$ "	1 $\frac{7}{32}$ "	27 $\frac{1}{2}$ "	13"	15 $\frac{5}{16}$ "
DP-1000	10	230/460	3	3"	4"	10"	8 $\frac{1}{4}$ "	1 $\frac{7}{32}$ "	29 $\frac{5}{16}$ "	13"	15 $\frac{5}{16}$ "

FILTRATION EQUIPMENT

DIATOMACEOUS EARTH SPIN FILTERS

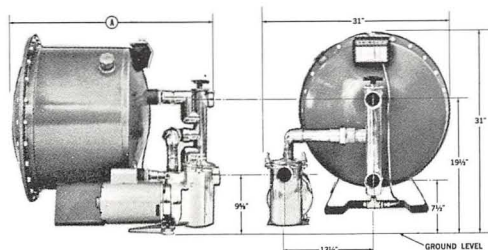
These diatomaceous earth filters offered by Hydrel are designed for commercial fountain installations. The tank and fittings are of stainless steel construction. Cast bronze self-priming pump and strainer assembly, 115/230 volts, single phase, 60 cycle. Equipped with a quick positioning back wash valve, pressure gauge, air relief valve, spin crank, and 1½" NPT face piping.



CATALOG NUMBER	AREA	H.P.	GPM AT FT. OF HEAD	DIMENSIONS
DF-12	12	⅓	24 @ 45'	37¾"x19⅝"x25⅜"
DF-15	15	½	30 @ 45'	37¾"x19⅝"x25⅜"
DF-25	25	¾	50 @ 45'	40¾"x19⅝"x25⅜"

HIGH RATE PERMANENT MEDIA FILTERS

Dependable, highly efficient and compact, the high rate permanent media filters remove particles down to three microns in size. It is extremely economical to operate with longer filter runs, less wasted water, and a faster back wash. Periodic cleaning is accomplished in less than two minutes by a simple fingertip manipulation of the Unitrol Valve. Other features are: complete porcelain lining on all wetted surfaces — maximum flow with minimum turbulence — extra large magnesium anode provides protection from electrolysis — Telometer Console center with two gauges, air elimination valve — all bronze self priming pump with extra large molded strainer basket. All pumps furnished standard with 115/230 volt single phase 60 cycle motors.



PHYSICAL DIMENSION CHART

CATALOG NO.	MODEL NO.	DIMENSION "A"
24600-25	HRU-25	28½"
24600-35		
24600-45	HRU-35	34½"
24600-55		
24600-65	HRU-45	40½"
24600-75		

RATE AND CAPACITY CHART

CATALOG NUMBER	MODEL NUMBER	SQ. FT. OF FILTER AREA	PUMP			FLOW RATE G.P.M./SQ. FT. FILTER AREA	G.P.M. AT FT. OF HEAD	CAPACITY IN GALLONS PER:		
			H.P.	MATERIAL	MODEL			HOURLY	8 HOURS	12 HOURS
24600-25	HRU-25	2.5	½	Bronze	XL-VI	15	37.5 @ 47'	2250	18,000	27,000
24600-35	HRU-25	2.5	¾	Bronze	XL-VI	20	50 @ 47'	3000	24,000	36,000
24600-45	HRU-35	3.5	¾	Bronze	XL-VI	15	52.5 @ 45'	3150	25,200	37,800
24600-55	HRU-35	3.5	1	Bronze	XL-VI	20	70 @ 48'	4200	33,600	50,400
24600-65	HRU-45	4.5	1	Bronze	XL-VI	15	67.5 @ 50'	4050	32,400	48,600
24600-75	HRU-45	4.5	1½	Bronze	XL-VI	20	90.0 @ 49'	5400	43,200	64,800

NOTE: All pumps furnished standard with 115/230 volt, 60 cycle, single phase motors.

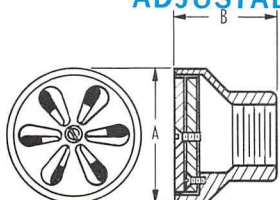
FILTER MEDIA REQUIREMENTS CHART

MODEL NUMBER	FILTER TANK SIZE		APPROXIMATE FREEBOARD	GRADE #20 SILICA SAND		SIEVE ANALYSIS FOR GRADE #20 SILICA SAND	
	DIAMETER	LENGTH		NUMBER OF SACKS REQ.	WEIGHT IN POUNDS	TYLER SIEVE NO.	% RETAINED
HRU-25	24"	17"	9"	1½	150	20	2
HRU-35	24"	23"	9"	2¼	225	30	58
HRU-45	24"	29"	9"	3	300	40	36
						50	4

HYDREL CORPORATION

FITTINGS

ADJUSTABLE INLET FITTINGS

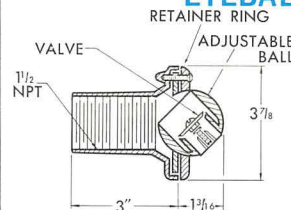


These chrome plated, bronze, wall inlet fittings can be adjusted to regulate and balance the flow of filtered water into the pool. Available in two sizes:

ARF-150—1½" NPT (A=3½, B=1½)

ARF-200—2" NPT (A=4¾, B=2)

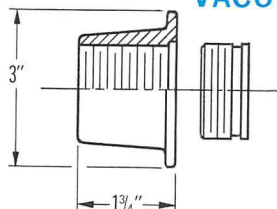
EYEBALL INLET FITTING



AEF-150

This wall inlet fitting is adjustable in direction and rate of flow. Maximum deflection approximately 45° and flow rate adjustable from suggested maximum of 25 G.P.M. to full closed. Body is cast bronze; retainer ring and adjustable ball is made of strong, smooth cyclac. AEF-150, 1½" NPT.

VACUUM FITTING

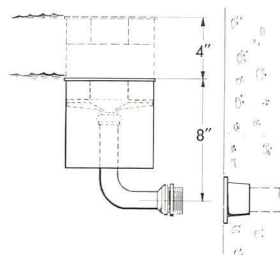


VF-150

The VF-150 vacuum fitting is installed in pool wall for use with a 1½" pool vacuum cleaner. Constructed of heavy cast bronze, chrome finish.

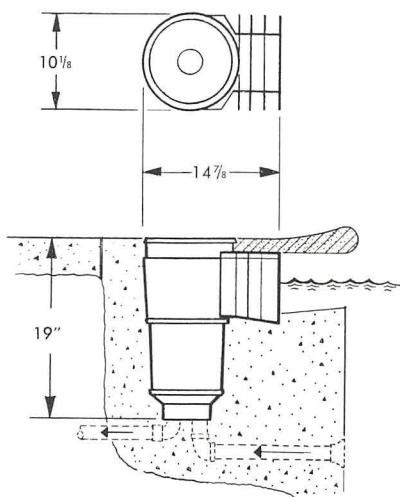
VF-150, 1½" NPT.

FLOATING SKIMMER



FS-150

Adapts to standard 1½" vacuum fitting. Six inch plastic float adjusts to water level for perfect skimming action.

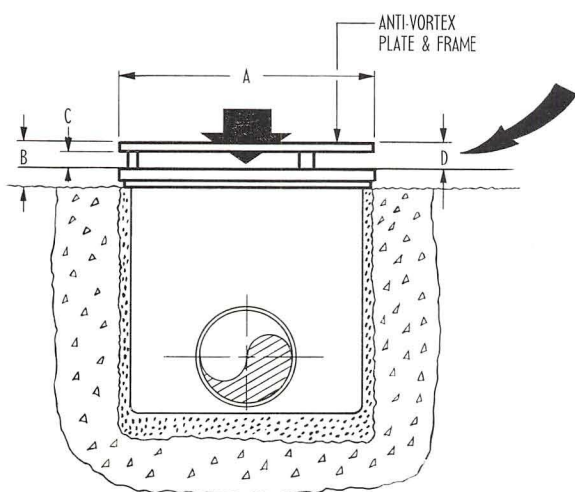


SURFACE SKIMMER

MODEL SK-300

The SK-300 automatic surface skimmer, constructed of Cyclac, provides a light-weight rugged unit that is simple to install. Designed for connection to equalizer line and has built in check valve to prevent flow through equalizer line until safety-float valve closes. Provided with removable debris basket and may be used for connection of vacuum hose.

ANTI-VORTEX PLATE ASSEMBLIES



In shallow pool applications, it is often desirable to place an anti-vortex plate assembly over a sump in the floor of the pool to avoid water vortexing as it is drawn into the suction line. The assembly consists of a cast bronze mounting ring and a polished chrome cast bronze diverter plate.

Cat. No.	Max. GPM	A	B	C	D
AVF-8	200	8"	3/4"	3/16"	3/8"
AVF-12	440	12"	1-11/16"	5/8"	7/8"
AVF-20	950	20"	2"	13/16"	1-1/16"

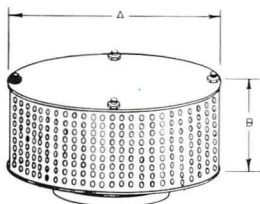
ANTI-VORTEX PLATE AND SUMP

Catalog No. AVF-8S

This is a complete 8" anti-vortex assembly with an integral sump, constructed entirely of Cyclac. Sump is 7" deep and provided with a 2" NPT side outlet.

SUCTION SCREENS

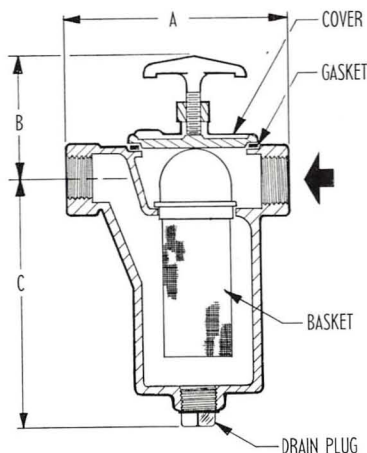
Designed to prevent clogging of nozzles and other elements of the hydraulic system, the suction screens are constructed of heavy brass sheet end plates and perforated brass screen. Complete with threaded collars for mounting to male N.P.T. suction line connection in pool.



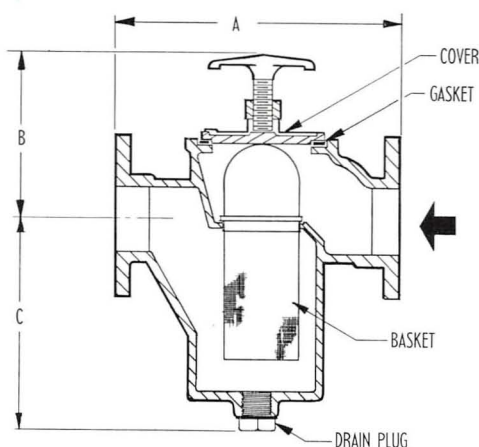
CATALOG NUMBER	CAPACITY GPM MAX.	DIMENSIONS		FEMALE PIPE SIZE
		A	B	
SS-100	100	6"	4"	2" NPT
SS-200	200	6"	6"	2" & 3" NPT Specify
SS-300	300	12"	6"	3" & 4" NPT Specify
SS-500	500	18"	6"	4" & 5" NPT Specify
SS-600	600	24"	6"	5" & 6" NPT Specify

PUMP STRAINERS

Pump strainers are available in several sizes and types. Models listed in this catalog are "in-line" with entrance and discharge openings at same elevation. Sizes 1½" through 3" are screwed connection. 4" through 8" are flanged. "Off-set" models available on special order. Cast iron construction with brass basket.

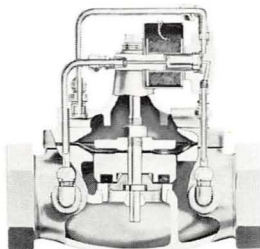


CATALOG NUMBER	SIZE	A	B	C
LSS-15	1½"	7"	3½"	7⅞"
LSS-20	2"	8½"	4⅜"	8"
LSS-25	2½"	11¾"	4⅞"	11¼"
LSS-30	3"	11¾"	4⅞"	11¼"



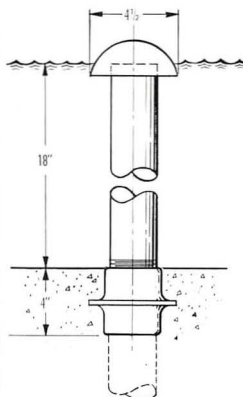
CATALOG NUMBER	SIZE	A	B	C
LSF-40	4"	13¾"	7"	10⅞"
LSF-50	5"	16⅞"	8¼"	12¾"
LSF-60	6"	17⅝"	8¾"	14⅞"
LSF-80	8"	23⅝"	12"	17⅞"

AUTOMATIC SOLENOID VALVES



Hydrel offers a wide selection of high quality solenoid activated automatic valves, such as the unit illustrated. Available for single step or multi-step operation. Cast iron construction, bronze trim. Available in pipe sizes from 1" through 16". Contact factory for specifications and quotation.

OVER-FLOW STANDPIPE AND DRAIN FITTING

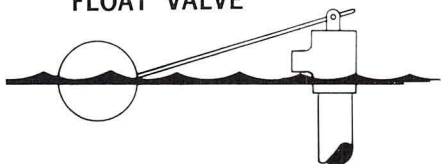


OSP-20. Consists of chrome plated copper dome, 18" length, 2" chrome plated copper standpipe, threaded one end, and cast bronze floor entrance fitting with integral capillary ring. For 2" N.P.T. drain line.

WATER LEVEL CONTROL UNITS

For automatic control of water make up, lost through evaporation or "splash-out."

FLOAT VALVE



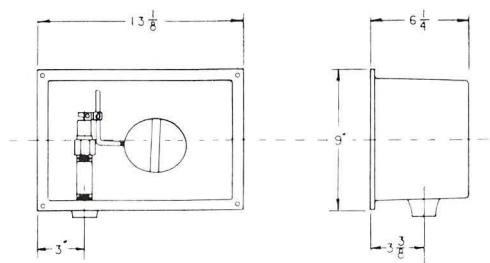
	SIZE VALVE	NPT
FV-50	1/2"	1/2"
FV-75	3/4"	3/4"
FV-100	1"	1"

Economy model consists of float and valve assembly for connection to make up line exposed in open pool.

FVN-75



FLOAT VALVE WITH NICHE



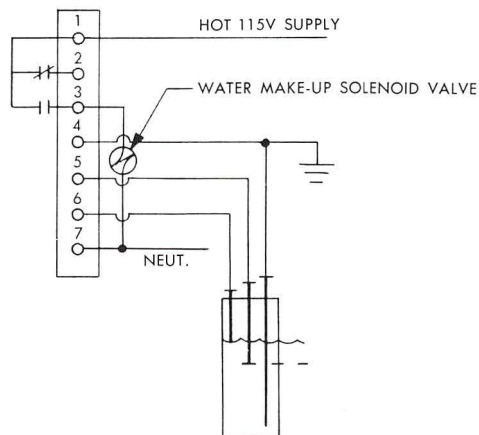
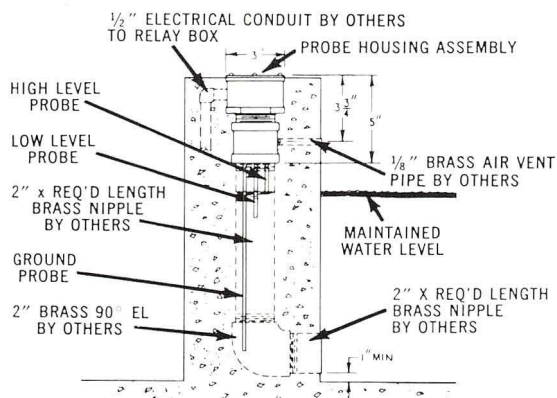
NICHE MODEL

Heavy formed fiberglass niche is recessed in pool wall and houses float and valve. Face is covered with slotted chrome plated bronze cover. Protects assembly from damage and vandalism.

	VALVE SIZE	NPT
FVN-75	3/4"	3/4"

MODEL HLP—ELECTRIC WATER LEVEL SENSING SYSTEM

The HLP sensing unit measures pool water levels by making electrically conductive water a part of the control circuit. The assembly consists of probe unit and control relay panel mounted in NEMA enclosure. Control unit then activates automatic solenoid valve for water make up. Valves are listed as a separate item below. Valve not included with HLP assembly.



AUTOMATIC SOLENOID FILL VALVES

The listed automatic solenoid valves are of high quality bronze and stainless steel construction. They are ideal for use with the HLP Water Level Sensing System. Solenoid coils are 120 Volt A.C.

Cat. No.	Size	Height	Length
AVS-75	3/4" NPT	5-1/2"	3-1/4"
AVS-100	1" NPT	5-3/4"	3-13/16"
AVS-150	1-1/2" NPT	7-1/16"	4-7/8"
AVS-200	2" NPT	8"	5-7/8"

TIME SWITCHES

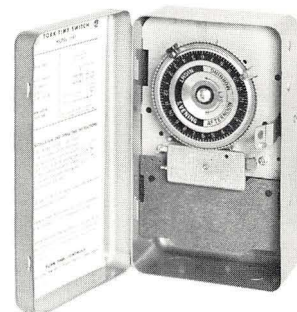
A well constructed series of time switches for automatically switching lighting circuits, fountain and filter pumps. Tungsten rated for 40 amps; 4375 watts Tungsten (incandescent); 1 HP; 125V AC. Clock motor rating: 125 Volts, 60 Cycle.

Standard Time Switches

ITC-1	125 Volt	SPST
ITC-2	125 Volt	DPST

Astronomic Dial Time Switches

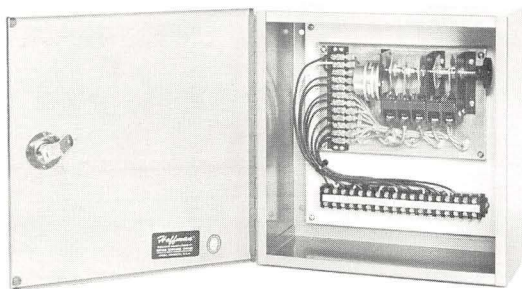
AD-1	125 Volt	SPST
AD-2	125 Volt	DPST
AD-4	125 Volt	4PST



CONTROL EQUIPMENT

DCC SERIES TIMERS

Quality engineered recycling timers, designed for maintenance free operation. The basic components are: U/L listed high quality synchronous motor with programmed phenolic cams and micro switches activating triac solid state relays. In ordering a DCC Timer, the desired program sequence and cycle time should be specified to permit proper cutting of cams. Time cycle available (one complete revolution of cam) 30 seconds to 6 minutes.

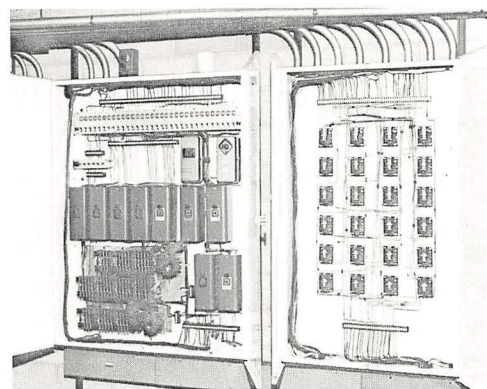


DCC TIMERS

Catalog Number	No. of Cams (Circuits) and Switches	Total Time Cycle	Incand. Wattage Rating per Sw. @ 115 V
DCC-1	1	30 Sec. to 6 Min.	1800 W
DCC-2	2	30 Sec. to 6 Min.	1800 W
DCC-3	3	30 Sec. to 6 Min.	1800 W
DCC-4	4	30 Sec. to 6 Min.	1800 W
DCC-5	5	30 Sec. to 6 Min.	1800 W

CUSTOM SEQUENCE CONTROLS

Sequence program control units are designed to develop and control a pre-scheduled series of water pattern and color light changing sequences. The frequency of these sequences may be varied at will in certain models. All components used in these units are "rugged service" quality devices for heavy duty switching loads. While all program timers of this type are custom built to order, the photograph of a Hydrel assembly will illustrate a typical unit.



WIND CONTROL UNIT

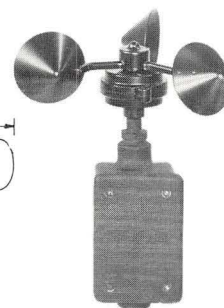
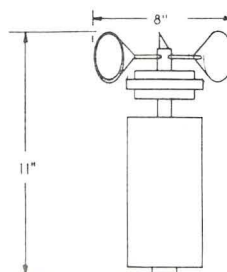
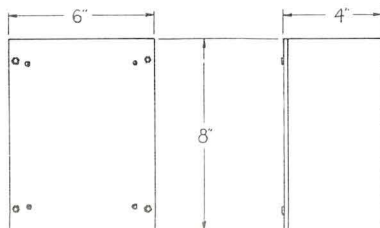
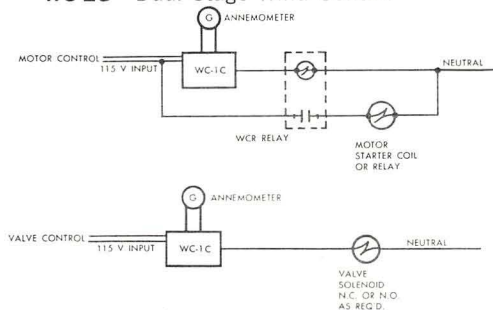
The Hydrel wind control unit was developed especially for fountain water control in exposed areas. The anemometer, consisting of the wind cups and a miniature generator, sends electrical impulses to the electronic balancing system housed in a control box at some convenient location. This unit will react to wind velocity change of the order of 1 mile per hour. Dial on face of cabinet permits adjustment of cut-off level at velocities from zero to 25 m.p.h. Integral time delay relay protects unit against over reacting to momentary gusts. Standard control suitable for solenoid valve controls. For motor starter control use intermediate relay WCR.



WC-1C Single Stage Wind Control

WCR Intermediate Relay, DPST 10 Amp Rating.

WC-2C Dual Stage Wind Control



ANEMOMETER

HYDREL CORPORATION

GUARANTEE

Hydrel products are guaranteed against mechanical and electrical defects for a period of one year from date of sale. Replacement or repair of authorized returns found upon inspection to be mechanically or electrically defective within the guarantee period shall constitute fulfillment of all obligations under this warranty. Hydrel assumes no responsibility for the proper installation of its products, or for labor or transportation costs involved in repair or replacement.

Hydrel products often require components and accessories not of its manufacture. The guarantee of the supplier of such components shall constitute the total liability of Hydrel.

Information contained in the catalog is accurate at time of printing, however, it is the policy of the Company to engage continuously in research and development for the improvement of its products and the Company therefore reserves the right to discontinue or modify designs or specifications without incurring any obligation.

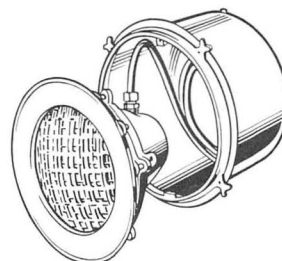
ADDITIONAL HYDREL PRODUCTS



RECESSED LIGHTING



FOUNTAIN LIGHTING



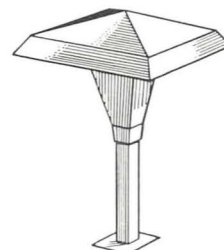
SWIMMING POOL LIGHTING



LANDSCAPE LIGHTING



ARCHITECTURAL SPOT LIGHTS



ARCHITECTURAL LIGHTS

HYDREL
CORPORATION

9415 TELFAIR AVENUE • POST OFFICE BOX 1041
SUN VALLEY, CALIFORNIA • PHONE: (213) 875-0131
ZIP CODE 91352



HYDREL CORPORATION

9415 TELFAIR AVENUE • POST OFFICE BOX 1041
SUN VALLEY, CALIFORNIA • PHONE: (213) 875-0131
ZIP CODE 91352